

# SAP18 Polyclonal Antibody



Catalog Number: 164322

## Product name

SAP18 Polyclonal Antibody

## Specificity

Human, Mouse, Rat

## Antibody description

Polyclonal antibody to SAP18

## Preparation

Antigen: Recombinant fusion protein containing a sequence corresponding to amino acids 21-172 of human SAP18 (NP\_005861.2).

## Formulation

PBS with 0.02% sodium azide, 50% glycerol, pH7.3.

## Storage

Store at -20°C. Avoid freeze / thaw cycles.

## Clonality

Polyclonal

## Ig Type

Rabbit IgG

## Applications

WB, IHC, IF

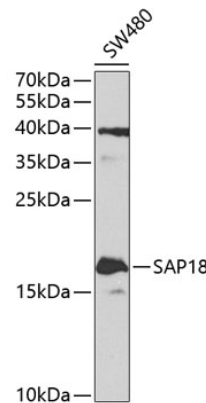
## Dilutions

WB 1:200 - 1:2000

IHC 1:50 - 1:200

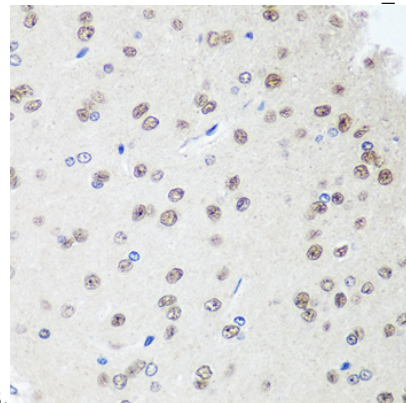
IF 1:50 - 1:200

## Validations



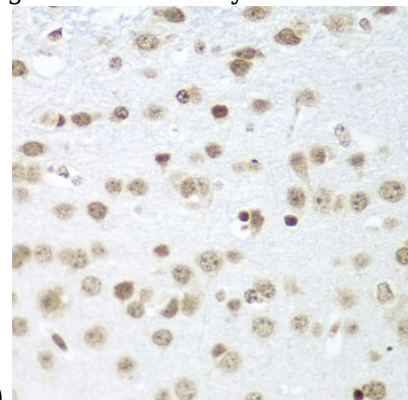
Western blot - SAP18 Polyclonal Antibody

Western blot analysis of extracts of SW480 cells, using SAP18 antibody at 1:1000 dilution. Secondary antibody: HRP Goat Anti-Rabbit IgG (H+L) at 1:10000 dilution. Lysates/proteins: 25ug per lane. Blocking buffer: 3% nonfat dry milk in TBST. Detection: ECL Enhanced Kit. Exposure



Immunohistochemistry - SAP18 Polyclonal Antibody

Immunohistochemistry of paraffin-embedded rat brain using SAP18 antibody at dilution of 1:100



# SAP18 Polyclonal Antibody



Catalog Number: 164322

---

Immunohistochemistry - SAP18 Polyclonal Antibody

Immunohistochemistry of paraffin-embedded mouse brain using SAP18 antibody at dilution of 1:100 (40x lens).