

ARHGEF1 Polyclonal Antibody



Catalog Number: 164298

Product name

ARHGEF1 Polyclonal Antibody

Specificity

Human

Antibody description

Polyclonal antibody to ARHGEF1

Preparation

Antigen: Recombinant fusion protein containing a sequence corresponding to amino acids 783-912 of human ARHGEF1 (NP_004697.2).

Formulation

PBS with 0.02% sodium azide, 50% glycerol, pH7.3.

Storage

Store at -20°C. Avoid freeze / thaw cycles.

Clonality

Polyclonal

Ig Type

Rabbit IgG

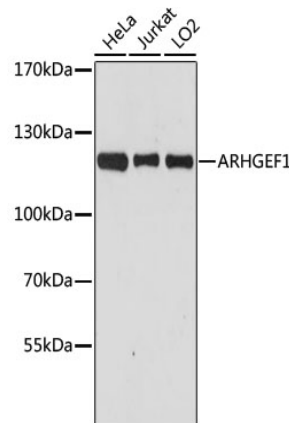
Applications

WB, IHC, IF

Dilutions

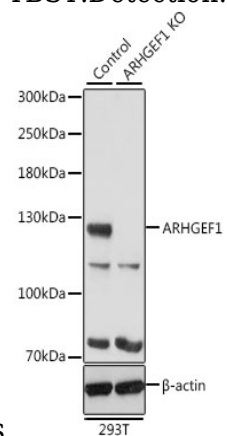
WB 1:500 - 1:2000
IHC 1:50 - 1:100
IF 1:50 - 1:200

Validations



Western blot - ARHGEF1 Polyclonal Antibody

Western blot analysis of extracts of various cell lines, using ARHGEF1 antibody at 1:3000 dilution. Secondary antibody: HRP Goat Anti-Rabbit IgG (H+L) at 1:10000 dilution. Lysates/proteins: 25ug per lane. Blocking buffer: 3% nonfat dry milk in TBST. Detection: ECL Basic Kit. Exposure time: 90s.



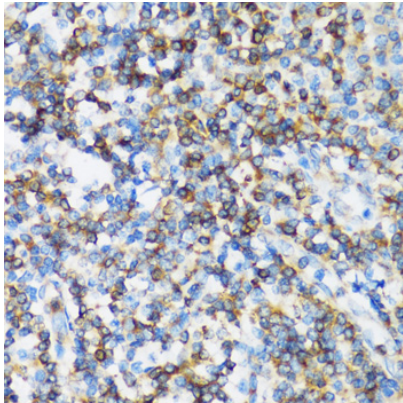
Western blot - ARHGEF1 Polyclonal Antibody

Western blot analysis of extracts from normal (control) and ARHGEF1 knockout 293T cells, using ARHGEF1 antibody at 1:500 dilution. Secondary antibody: HRP Goat Anti-Rabbit IgG (H+L) at 1:10000 dilution. Lysates/proteins: 25ug per lane. Blocking buffer: 3% nonfat dry milk in TBST. Detection: ECL Basic Kit. Exposure time: 10s.

ARHGEF1 Polyclonal Antibody



Catalog Number: 164298



Immunohistochemistry - ARHGEF1 Polyclonal Antibody

Immunohistochemistry of paraffin-embedded human tonsil using ARHGEF1 antibody at dilution of 1:100 (40x lens).