

KRT81 Polyclonal Antibody



Catalog Number: 164240

Product name

KRT81 Polyclonal Antibody

Specificity

Human

Antibody description

Polyclonal antibody to KRT81

Preparation

Antigen: Recombinant fusion protein containing a sequence corresponding to amino acids 240-390 of human KRT81 (NP_002272.2).

Formulation

PBS with 0.02% sodium azide, 50% glycerol, pH7.3.

Storage

Store at -20°C. Avoid freeze / thaw cycles.

Clonality

Polyclonal

Ig Type

Rabbit IgG

Applications

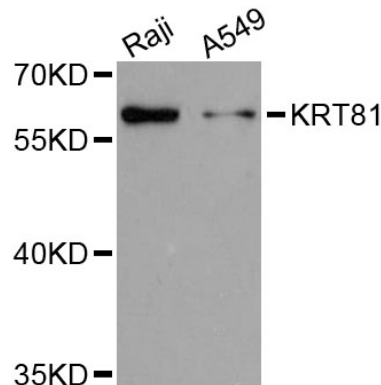
WB, IHC

Dilutions

WB 1:500 - 1:2000

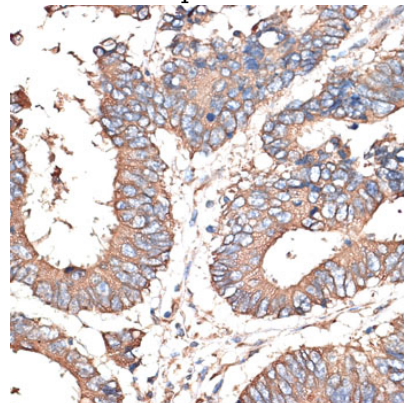
IHC 1:50 - 1:200

Validations



Western blot - KRT81 Polyclonal Antibody

Western blot analysis of extracts of various cell lines, using KRT81 antibody at 1:3000 dilution. Secondary antibody: HRP Goat Anti-Rabbit IgG (H+L) at 1:10000 dilution. Lysates/proteins: 25ug per lane. Blocking buffer: 3% nonfat dry milk in TBST. Detection: ECL Basic Kit. Exposure time: 90s.

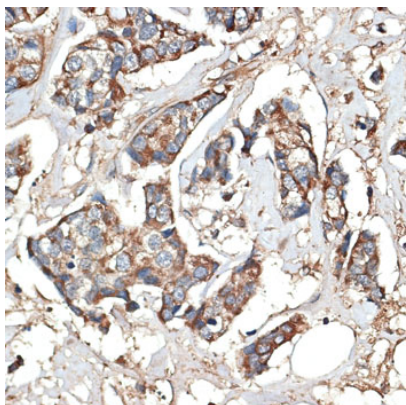


Immunohistochemistry - KRT81 Polyclonal Antibody

Immunohistochemistry of paraffin-embedded human colon carcinoma using KRT81 antibody at dilution of 1:100 (40x lens).

KRT81 Polyclonal Antibody

Catalog Number: 164240



Immunohistochemistry - KRT81 Polyclonal Antibody

Immunohistochemistry of paraffin-embedded human mammary cancer using KRT81 antibody at dilution of 1:100 (40x lens).