

SEPT7 Polyclonal Antibody



Catalog Number: 164200

Product name

SEPT7 Polyclonal Antibody

Specificity

Human, Mouse, Rat

Antibody description

Polyclonal antibody to SEPT7

Preparation

Antigen: Recombinant fusion protein containing a sequence corresponding to amino acids 307-436 of human SEPT7 (NP_001011553.2).

Formulation

PBS with 0.02% sodium azide, 50% glycerol, pH7.3.

Storage

Store at -20°C. Avoid freeze / thaw cycles.

Clonality

Polyclonal

Ig Type

Rabbit IgG

Applications

WB, IHC, IF

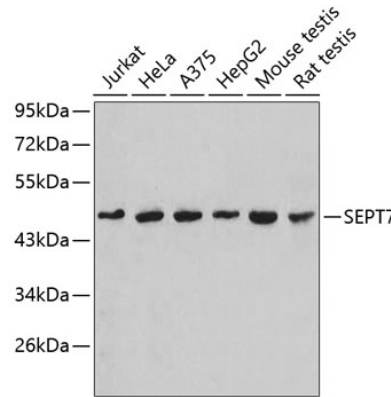
Dilutions

WB 1:1000 - 1:2000

IHC 1:50 - 1:200

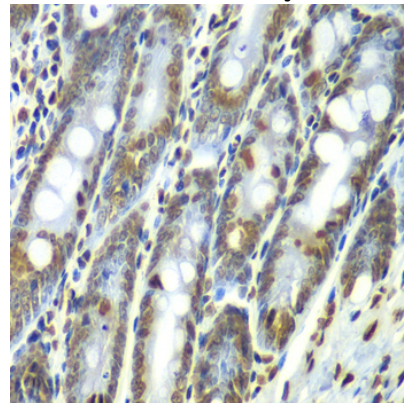
IF 1:50 - 1:100

Validations



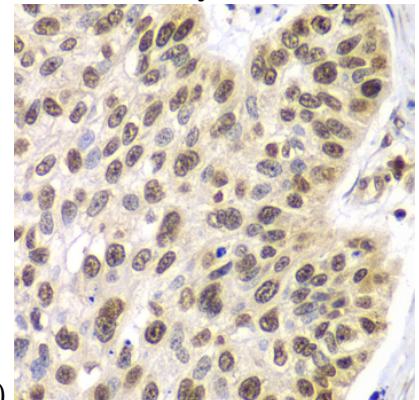
Western blot - SEPT7 Polyclonal Antibody

Western blot analysis of extracts of various cell lines, using SEPT7 antibody. Secondary antibody: HRP Goat Anti-Rabbit IgG (H+L) at 1:10000 dilution. Lysates/proteins: 25ug per lane. Blocking buffer: 3% nonfat dry milk in TBST.



Immunohistochemistry - SEPT7 Polyclonal Antibody

Immunohistochemistry of paraffin-embedded rat Intestine using SEPT7 antibody at dilution of



1:100 (40x lens).

Immunohistochemistry - SEPT7 Polyclonal

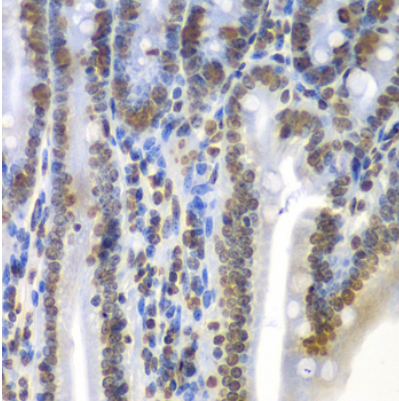
SEPT7 Polyclonal Antibody



Catalog Number: 164200

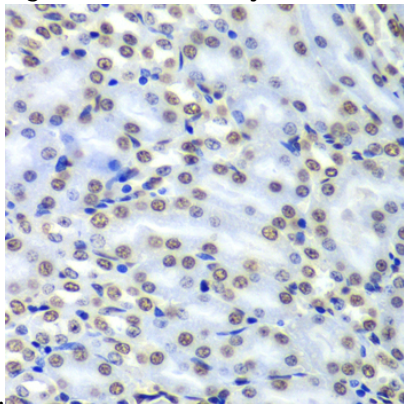
Antibody

Immunohistochemistry of paraffin-embedded human lung cancer using SEPT7 antibody at dilution of 1:100 (40x lens).



Immunohistochemistry - SEPT7 Polyclonal Antibody

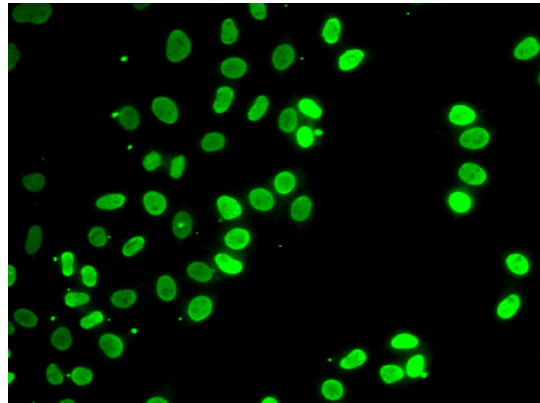
Immunohistochemistry of paraffin-embedded mouse Intestine using SEPT7 antibody at dilution



of 1:100 (40x lens).

Immunohistochemistry - SEPT7 Polyclonal Antibody

Immunohistochemistry of paraffin-embedded mouse kidney using SEPT7 antibody at dilution of 1:100 (40x lens).



Immunofluorescence - SEPT7 Polyclonal Antibody

Immunofluorescence analysis of HeLa cells using SEPT7 antibody .