

ALDH3A2 Monoclonal Antibody



Catalog Number: 164192

Product name

ALDH3A2 Monoclonal Antibody

Specificity

Human

Antibody description

Monoclonal antibody to ALDH3A2

Preparation

Antigen: A synthetic peptide of human ALDH3A2

Formulation

PBS with 0.02% sodium azide, pH7.3.

Storage

Store at 4°C. Avoid freeze / thaw cycles.

Clonality

Monoclonal

Ig Type

Mouse IgG

Applications

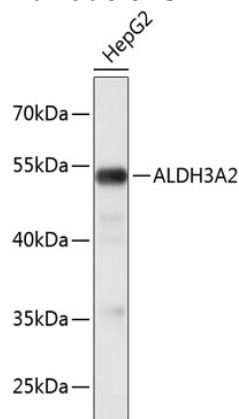
WB, IHC

Dilutions

WB 1:500 - 1:1000

IHC 1:50 - 1:100

Validations



Western blot - ALDH3A2 Monoclonal Antibody

Western blot analysis of extracts of HepG2 cells, using ALDH3A2 antibody. Secondary antibody: HRP Goat Anti-Mouse IgG (H+L) at 1:10000 dilution. Lysates/proteins: 25ug per lane. Blocking buffer: 3% nonfat dry milk in TBST.