

# ANO2 Polyclonal Antibody



Catalog Number: 164180

## Product name

ANO2 Polyclonal Antibody

## Specificity

Human, Mouse, Rat

## Antibody description

Polyclonal antibody to ANO2

## Preparation

Antigen: Recombinant fusion protein containing a sequence corresponding to amino acids 1-200 of human ANO2 (NP\_001265526.1).

## Formulation

PBS with 0.02% sodium azide, 50% glycerol, pH7.3.

## Storage

Store at -20°C. Avoid freeze / thaw cycles.

## Clonality

Polyclonal

## Ig Type

Rabbit IgG

## Applications

WB, IHC, IF

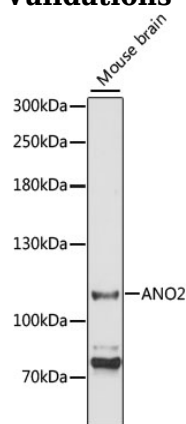
## Dilutions

WB 1:500 - 1:2000

IHC 1:50 - 1:100

IF 1:50 - 1:100

## Validations



Western blot - ANO2 Polyclonal Antibody

Western blot analysis of extracts of mouse brain, using ANO2 antibody at 1:3000 dilution. Secondary antibody: HRP Goat Anti-Rabbit IgG (H+L) at 1:10000 dilution. Lysates/proteins: 25ug per lane. Blocking buffer: 3% nonfat dry milk in TBST. Detection: ECL Basic Kit. Exposure time: 90s.