

# THAP2 Polyclonal Antibody



Catalog Number: 164137

## Product name

THAP2 Polyclonal Antibody

## Specificity

Mouse, Rat

## Antibody description

Polyclonal antibody to THAP2

## Preparation

Antigen: Recombinant fusion protein containing a sequence corresponding to amino acids 83-228 of human THAP2 (NP\_113623.1).

## Formulation

PBS with 0.02% sodium azide, 50% glycerol, pH7.3.

## Storage

Store at -20°C. Avoid freeze / thaw cycles.

## Clonality

Polyclonal

## Ig Type

Rabbit IgG

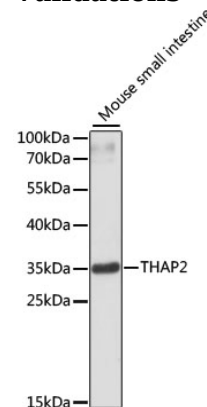
## Applications

WB

## Dilutions

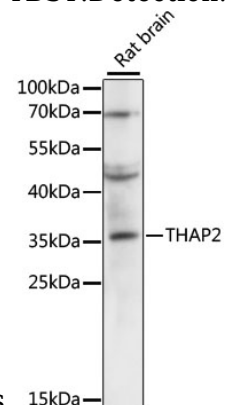
WB 1:500 - 1:2000

## Validations



Western blot - THAP2 Polyclonal Antibody

Western blot analysis of extracts of mouse small intestine, using THAP2 antibody at 1:3000 dilution. Secondary antibody: HRP Goat Anti-Rabbit IgG (H+L) at 1:10000 dilution. Lysates/proteins: 25ug per lane. Blocking buffer: 3% nonfat dry milk in TBST. Detection: ECL



Basic Kit .Exposure time: 90s.

Western blot - THAP2 Polyclonal Antibody

Western blot analysis of extracts of rat brain, using THAP2 antibody at 1:3000 dilution. Secondary antibody: HRP Goat Anti-Rabbit IgG (H+L) at 1:10000 dilution. Lysates/proteins: 25ug per lane. Blocking buffer: 3% nonfat dry milk in TBST. Detection: ECL Enhanced Kit .Exposure time: 5s.