

SLC39A7 Polyclonal Antibody



Catalog Number: 164098

Product name

SLC39A7 Polyclonal Antibody

Specificity

Human, Mouse, Rat

Antibody description

Polyclonal antibody to SLC39A7

Preparation

Antigen: Recombinant fusion protein containing a sequence corresponding to amino acids 235-380 of human SLC39A7 (NP_008910.2).

Formulation

PBS with 0.02% sodium azide, 50% glycerol, pH7.3.

Storage

Store at -20°C. Avoid freeze / thaw cycles.

Clonality

Polyclonal

Ig Type

Rabbit IgG

Applications

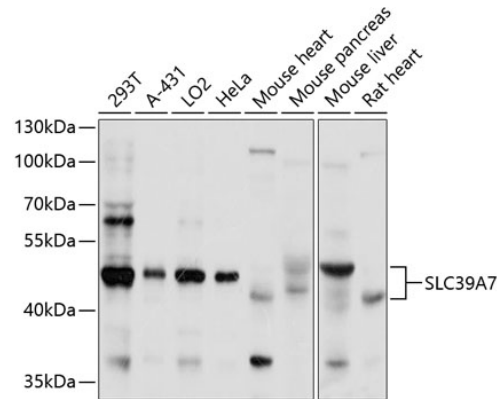
WB, IHC

Dilutions

WB 1:1000 - 1:3000

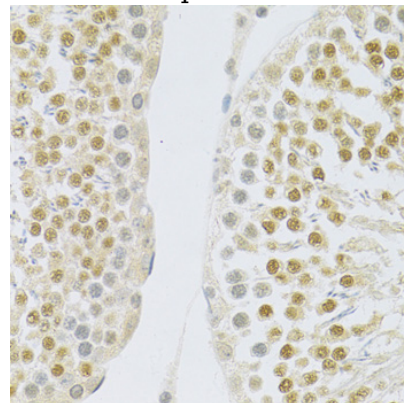
IHC 1:100 - 1:200

Validations



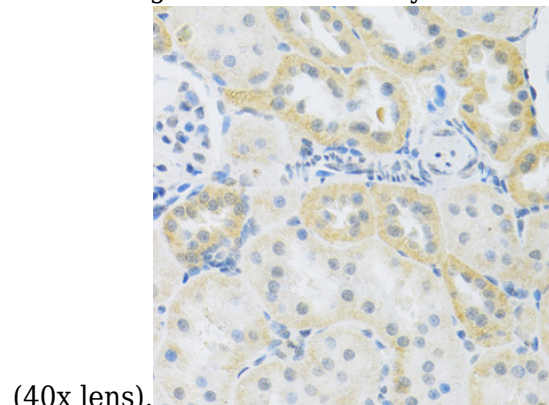
Western blot - SLC39A7 Polyclonal Antibody

Western blot analysis of extracts of various cell lines, using SLC39A7 antibody at 1:1000 dilution. Secondary antibody: HRP Goat Anti-Rabbit IgG (H+L) at 1:10000 dilution. Lysates/proteins: 25ug per lane. Blocking buffer: 3% nonfat dry milk in TBST. Detection: ECL Basic Kit. Exposure time: 20s.



Immunohistochemistry - SLC39A7 Polyclonal Antibody

Immunohistochemistry of paraffin-embedded rat testis using SLC39A7 antibody at dilution of 1:100



(40x lens).

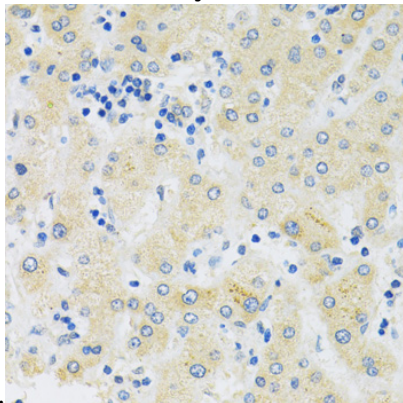
SLC39A7 Polyclonal Antibody



Catalog Number: 164098

Immunohistochemistry - SLC39A7 Polyclonal Antibody

Immunohistochemistry of paraffin-embedded rat kidney using SLC39A7 antibody at dilution of



1:100 (40x lens).

Immunohistochemistry - SLC39A7 Polyclonal Antibody

Immunohistochemistry of paraffin-embedded human liver using SLC39A7 antibody at dilution of 1:100 (40x lens).