

NDUFC2 Polyclonal Antibody



Catalog Number: 164089

Product name

NDUFC2 Polyclonal Antibody

Specificity

Human, Mouse, Rat

Antibody description

Polyclonal antibody to NDUFC2

Preparation

Antigen: A synthetic peptide of human NDUFC2

Formulation

PBS with 0.02% sodium azide, pH7.3.

Storage

Store at 4°C. Avoid freeze / thaw cycles.

Clonality

Polyclonal

Ig Type

Rabbit IgG

Applications

WB, IHC, IF, FC

Dilutions

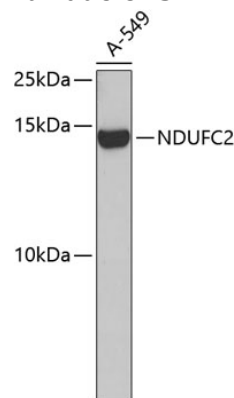
WB 1:500 - 1:2000

IHC 1:50 - 1:200

IF 1:20 - 1:50

FC 1:20 - 1:50

Validations



Western blot - NDUFC2 Polyclonal Antibody

Western blot analysis of extracts of A-549 cells, using NDUFC2 antibody. Secondary antibody: HRP Goat Anti-Rabbit IgG (H+L) at 1:10000 dilution. Lysates/proteins: 25ug per lane. Blocking buffer: 3% nonfat dry milk in TBST.