

# MYBL2 Polyclonal Antibody



Catalog Number: 164087

## Product name

MYBL2 Polyclonal Antibody

## Specificity

Human, Mouse

## Antibody description

Polyclonal antibody to MYBL2

## Preparation

Antigen: A synthetic peptide of human MYBL2

## Formulation

PBS with 0.02% sodium azide, pH7.3.

## Storage

Store at 4°C. Avoid freeze / thaw cycles.

## Clonality

Polyclonal

## Ig Type

Rabbit IgG

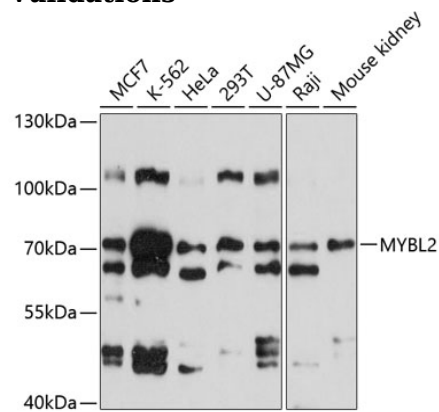
## Applications

WB

## Dilutions

WB 1:500 - 1:1000

## Validations



## Western blot - MYBL2 Polyclonal Antibody

Western blot analysis of extracts of various cell lines, using MYBL2 antibody at 1:1000 dilution. Secondary antibody: HRP Goat Anti-Rabbit IgG (H+L) at 1:10000 dilution. Lysates/proteins: 25ug per lane. Blocking buffer: 3% nonfat dry milk in TBST. Detection: ECL Basic Kit. Exposure time: 90s.