

# SLC5A1 Polyclonal Antibody



Catalog Number: 164033

## Product name

SLC5A1 Polyclonal Antibody

## Specificity

Human, Mouse, Rat

## Antibody description

Polyclonal antibody to SLC5A1

## Preparation

Antigen: A synthetic peptide of human SLC5A1

## Formulation

PBS with 0.02% sodium azide, 50% glycerol, pH7.3.

## Storage

Store at -20°C. Avoid freeze / thaw cycles.

## Clonality

Polyclonal

## Ig Type

Rabbit IgG

## Applications

WB, IHC, IF

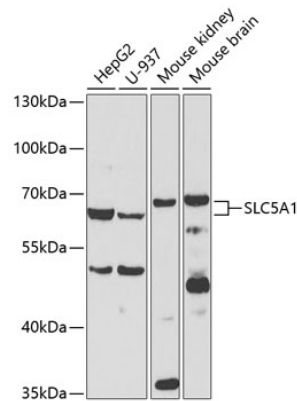
## Dilutions

WB 1:500 - 1:2000

IHC 1:50 - 1:100

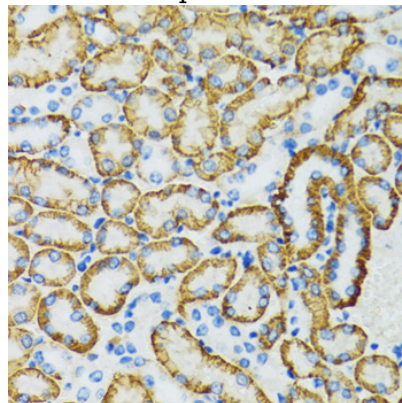
IF 1:50 - 1:100

## Validations



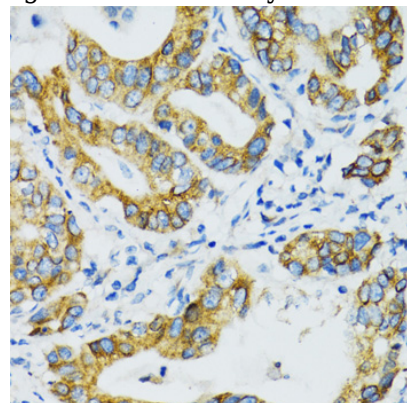
Western blot - SLC5A1 Polyclonal Antibody

Western blot analysis of extracts of various cell lines, using SLC5A1 antibody at 1:500 dilution. Secondary antibody: HRP Goat Anti-Rabbit IgG (H+L) at 1:10000 dilution. Lysates/proteins: 25ug per lane. Blocking buffer: 3% nonfat dry milk in TBST. Detection: ECL Basic Kit. Exposure time: 120s.



Immunohistochemistry - SLC5A1 Polyclonal Antibody

Immunohistochemistry of paraffin-embedded rat kidney using SLC5A1 antibody at dilution of 1:100



(40x lens).

# SLC5A1 Polyclonal Antibody

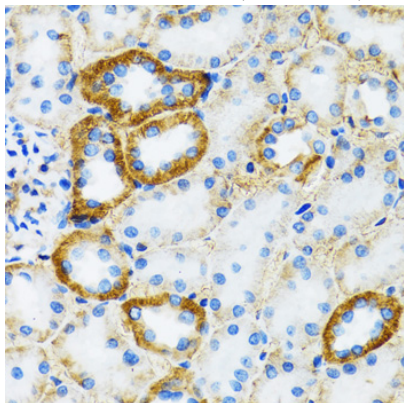


Catalog Number: 164033

---

## Immunohistochemistry - SLC5A1 Polyclonal Antibody

Immunohistochemistry of paraffin-embedded human gastric cancer using SLC5A1 antibody at dilution of 1:100 (40x lens).



## Immunohistochemistry - SLC5A1 Polyclonal Antibody

Immunohistochemistry of paraffin-embedded mouse kidney using SLC5A1 antibody at dilution of 1:100 (40x lens).