

# SUMO4 Polyclonal Antibody



Catalog Number: 164018

## Product name

SUMO4 Polyclonal Antibody

## Specificity

Human, Mouse

## Antibody description

Polyclonal antibody to SUMO4

## Preparation

Antigen: A synthetic peptide of human SUMO4

## Formulation

PBS with 0.02% sodium azide, 50% glycerol, pH7.3.

## Storage

Store at -20°C. Avoid freeze / thaw cycles.

## Clonality

Polyclonal

## Ig Type

Rabbit IgG

## Applications

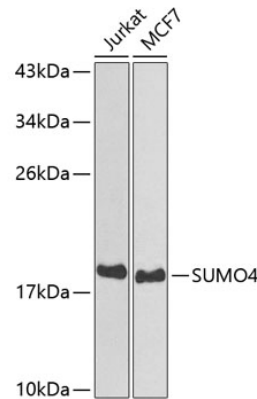
WB, IHC

## Dilutions

WB 1:1000 - 1:2000

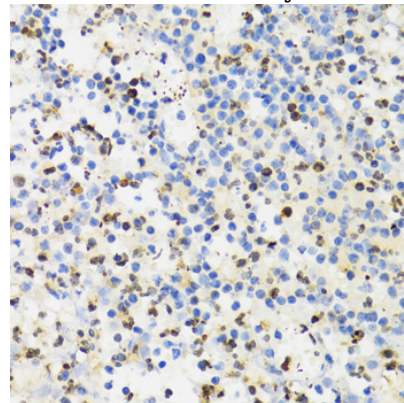
IHC 1:100 - 1:300

## Validations



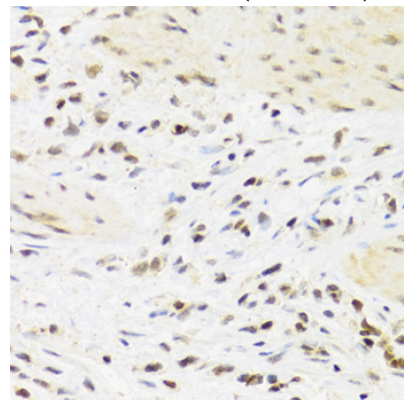
Western blot - SUMO4 Polyclonal Antibody

Western blot analysis of extracts of various cell lines, using SUMO4 antibody at 1:800 dilution. Secondary antibody: HRP Goat Anti-Rabbit IgG (H+L) at 1:10000 dilution. Lysates/proteins: 25ug per lane. Blocking buffer: 3% nonfat dry milk in TBST.



Immunohistochemistry - SUMO4 Polyclonal Antibody

Immunohistochemistry of paraffin-embedded human kidney cancer using SUMO4 Antibody at dilution of 1:200 (40x lens).



# SUMO4 Polyclonal Antibody

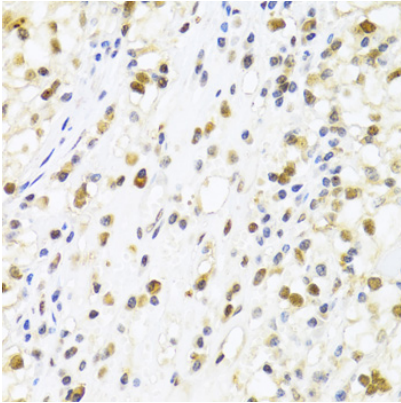


Catalog Number: 164018

---

## Immunohistochemistry - SUMO4 Polyclonal Antibody

Immunohistochemistry of paraffin-embedded human appendicitis using SUMO4 Antibody at dilution of 1:100 (40x lens).



## Immunohistochemistry - SUMO4 Polyclonal Antibody

Immunohistochemistry of paraffin-embedded human breast cancer using SUMO4 Antibody at dilution of 1:100 (40x lens).