

PAWR Polyclonal Antibody



Catalog Number: 164000

Product name

PAWR Polyclonal Antibody

Specificity

Human, Mouse, Rat

Antibody description

Polyclonal antibody to PAWR

Preparation

Antigen: Recombinant protein of human PAWR

Formulation

PBS with 0.02% sodium azide, 50% glycerol, pH7.3.

Storage

Store at -20°C. Avoid freeze / thaw cycles.

Clonality

Polyclonal

Ig Type

Rabbit IgG

Applications

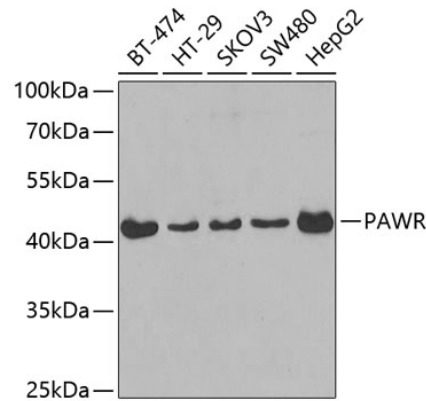
WB, IHC

Dilutions

WB 1:500 - 1:2000

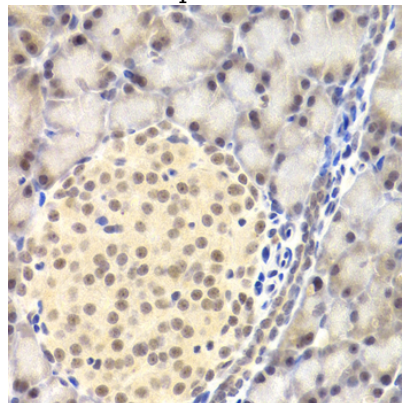
IHC 1:50 - 1:100

Validations



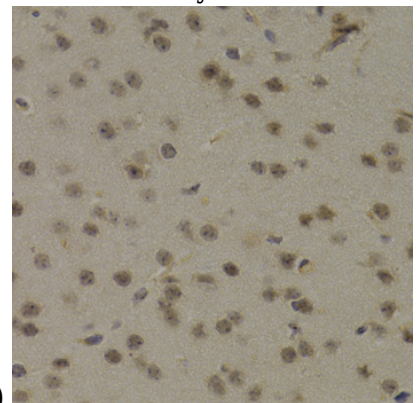
Western blot - PAWR Polyclonal Antibody

Western blot analysis of extracts of various cell lines, using PAWR antibody at 1:400 dilution. Secondary antibody: HRP Goat Anti-Rabbit IgG (H+L) at 1:10000 dilution. Lysates/proteins: 25ug per lane. Blocking buffer: 3% nonfat dry milk in TBST. Detection: ECL Basic Kit. Exposure time: 30s.



Immunohistochemistry - PAWR Polyclonal Antibody

Immunohistochemistry of paraffin-embedded rat pancreas using PAWR Antibody at dilution of



1:200 (40x lens).

PAWR Polyclonal Antibody



Catalog Number: 164000

Immunohistochemistry - PAWR Polyclonal Antibody

Immunohistochemistry of paraffin-embedded mouse brain using PAWR Antibody at dilution of 1:200 (40x lens).