

NPHS1 Polyclonal Antibody



Catalog Number: 163994

Product name

NPHS1 Polyclonal Antibody

Specificity

Human, Mouse

Antibody description

Polyclonal antibody to NPHS1

Preparation

Antigen: A synthetic peptide of human NPHS1

Formulation

PBS with 0.02% sodium azide, 50% glycerol, pH7.3.

Storage

Store at -20°C. Avoid freeze / thaw cycles.

Clonality

Polyclonal

Ig Type

Rabbit IgG

Applications

WB, IHC, IF

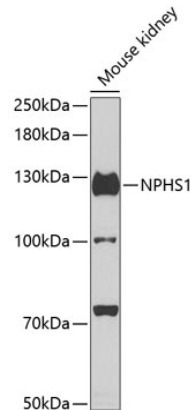
Dilutions

WB 1:500 - 1:2000

IHC 1:50 - 1:100

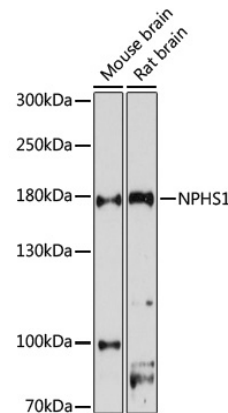
IF 1:50 - 1:200

Validations



Western blot - NPHS1 Polyclonal Antibody

Western blot analysis of extracts of mouse kidney, using NPHS1 antibody at 1:500 dilution. Secondary antibody: HRP Goat Anti-Rabbit IgG (H+L) at 1:10000 dilution. Lysates/proteins: 25ug per lane. Blocking buffer: 3% nonfat dry milk in TBST. Detection: ECL Enhanced Kit. Exposure time: 90s.

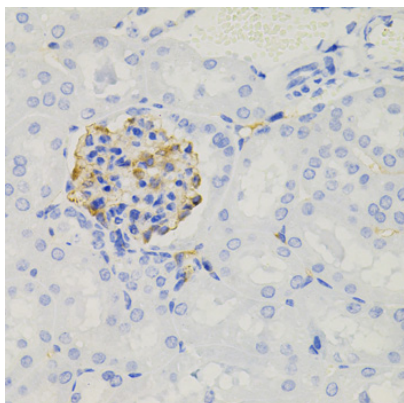


Western blot - NPHS1 Polyclonal Antibody

Western blot analysis of extracts of various cell lines, using NPHS1 antibody at 1:1000 dilution. Secondary antibody: HRP Goat Anti-Rabbit IgG (H+L) at 1:10000 dilution. Lysates/proteins: 25ug per lane. Blocking buffer: 3% nonfat dry milk in TBST. Detection: ECL Basic Kit. Exposure time: 90s.

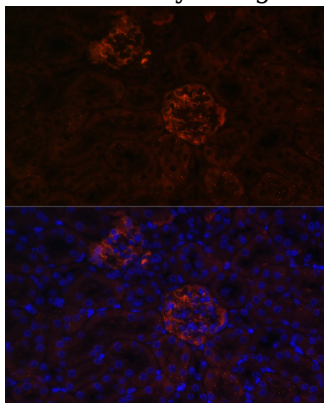
NPHS1 Polyclonal Antibody

Catalog Number: 163994



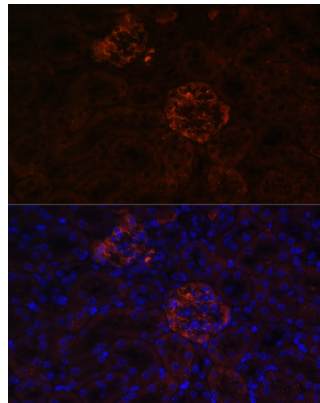
Immunohistochemistry - NPHS1 Polyclonal Antibody

Immunohistochemistry of paraffin-embedded mouse kidney using NPHS1 antibody (40x lens).



Immunofluorescence - NPHS1 Polyclonal Antibody

Immunofluorescence analysis of mouse kidney cells using NPHS1 antibody at dilution of 1:100. Blue: DAPI for nuclear staining.



Immunofluorescence - NPHS1 Polyclonal Antibody

Immunofluorescence analysis of mouse kidney cells using NPHS1 antibody at dilution of 1:100. Blue: DAPI for nuclear staining.