

MMP25 Polyclonal Antibody



Catalog Number: 163987

Product name

MMP25 Polyclonal Antibody

Specificity

Human, Mouse, Rat

Antibody description

Polyclonal antibody to MMP25

Preparation

Antigen: A synthetic peptide of human MMP25

Formulation

PBS with 0.02% sodium azide, 50% glycerol, pH7.3.

Storage

Store at -20°C. Avoid freeze / thaw cycles.

Clonality

Polyclonal

Ig Type

Rabbit IgG

Applications

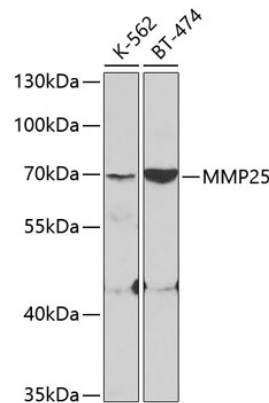
WB, IHC

Dilutions

WB 1:500 - 1:2000

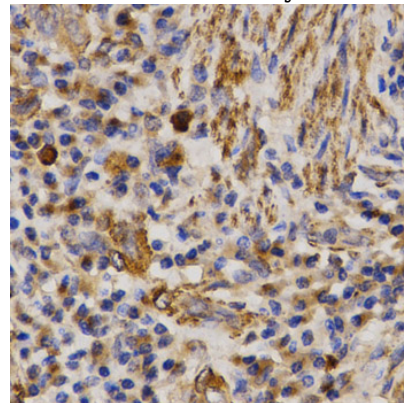
IHC 1:50 - 1:200

Validations



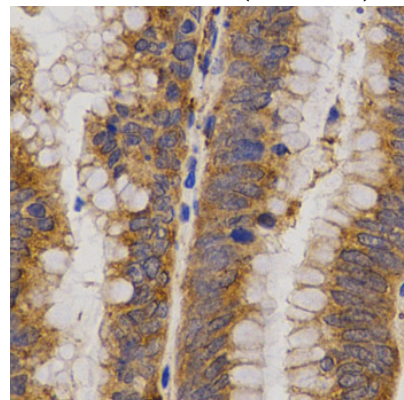
Western blot - MMP25 Polyclonal Antibody

Western blot analysis of extracts of various cell lines, using MMP25 antibody at 1:400 dilution. Secondary antibody: HRP Goat Anti-Rabbit IgG (H+L) at 1:10000 dilution. Lysates/proteins: 25ug per lane. Blocking buffer: 3% nonfat dry milk in TBST.



Immunohistochemistry - MMP25 Polyclonal Antibody

Immunohistochemistry of paraffin-embedded human lung cancer using MMP25 antibody at dilution of 1:200 (40x lens).



MMP25 Polyclonal Antibody



Catalog Number: 163987

Immunohistochemistry - MMP25 Polyclonal Antibody

Immunohistochemistry of paraffin-embedded human rectal cancer using MMP25 antibody at dilution of 1:200 (40x lens).