

MCM4 Polyclonal Antibody

Catalog Number: 163981

Product name

MCM4 Polyclonal Antibody

Specificity

Human, Mouse, Rat

Antibody description

Polyclonal antibody to MCM4

Preparation

Antigen: A synthetic peptide of human MCM4

Formulation

PBS with 0.02% sodium azide, 50% glycerol, pH7.3.

Storage

Store at -20°C. Avoid freeze / thaw cycles.

Clonality

Polyclonal

Ig Type

Rabbit IgG

Applications

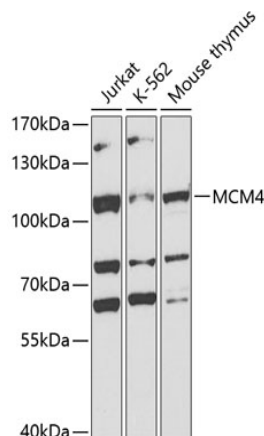
WB, IHC

Dilutions

WB 1:500 - 1:2000

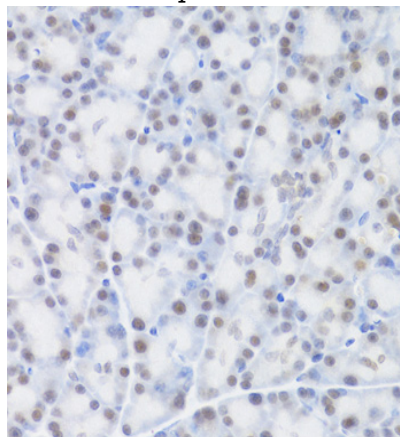
IHC 1:50 - 1:200

Validations



Western blot - MCM4 Polyclonal Antibody

Western blot analysis of extracts of various cell lines, using MCM4 antibody at 1:400 dilution. Secondary antibody: HRP Goat Anti-Rabbit IgG (H+L) at 1:10000 dilution. Lysates/proteins: 25ug per lane. Blocking buffer: 3% nonfat dry milk in TBST. Detection: ECL Basic Kit. Exposure time: 90s.



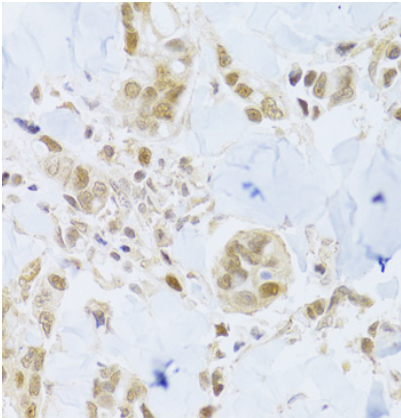
Immunohistochemistry - MCM4 Polyclonal Antibody

Immunohistochemistry of paraffin-embedded human B cell lymphoma using MCM4 Antibody at dilution of 1:200 (40x lens).

MCM4 Polyclonal Antibody

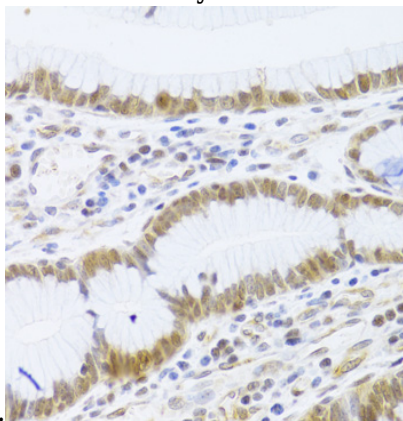


Catalog Number: 163981



Immunohistochemistry - MCM4 Polyclonal Antibody

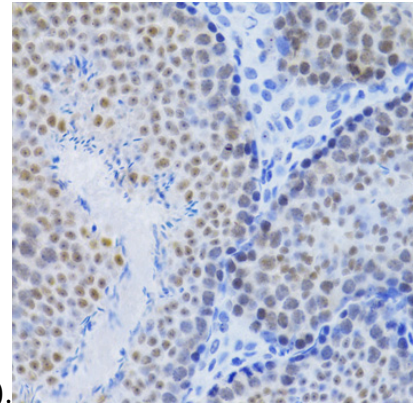
Immunohistochemistry of paraffin-embedded rat pancreas using MCM4 Antibody at dilution of



1:200 (40x lens).

Immunohistochemistry - MCM4 Polyclonal Antibody

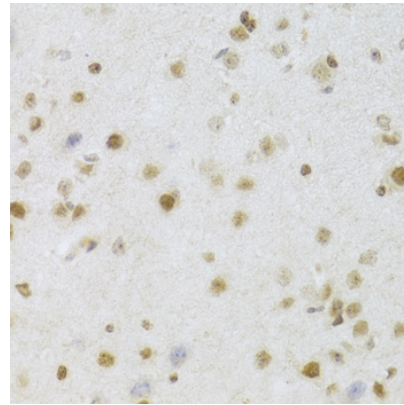
Immunohistochemistry of paraffin-embedded mouse brain using MCM4 Antibody at dilution of



1:200 (40x lens).

Immunohistochemistry - MCM4 Polyclonal Antibody

Immunohistochemistry of paraffin-embedded human gastric cancer using MCM4 Antibody at dilution of 1:200 (40x lens).



Immunohistochemistry - MCM4 Polyclonal Antibody

Immunohistochemistry of paraffin-embedded rat pancreas using MCM4 Antibody at dilution of 1:100 (40x lens).