

# KISS1R Polyclonal Antibody



Catalog Number: 163958

## Product name

KISS1R Polyclonal Antibody

## Specificity

Human, Mouse, Rat

## Antibody description

Polyclonal antibody to KISS1R

## Preparation

Antigen: A synthetic peptide of human KISS1R

## Formulation

PBS with 0.02% sodium azide, 50% glycerol, pH7.3.

## Storage

Store at -20°C. Avoid freeze / thaw cycles.

## Clonality

Polyclonal

## Ig Type

Rabbit IgG

## Applications

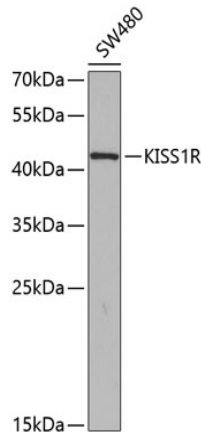
WB, IHC

## Dilutions

WB 1:500 - 1:1000

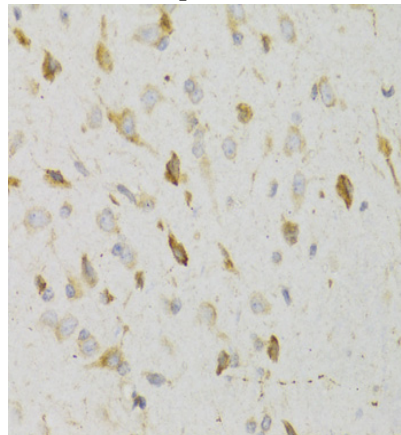
IHC 1:50 - 1:100

## Validations



Western blot - KISS1R Polyclonal Antibody

Western blot analysis of extracts of SW480 cells, using KISS1R antibody at 1:350 dilution. Secondary antibody: HRP Goat Anti-Rabbit IgG (H+L) at 1:10000 dilution. Lysates/proteins: 25ug per lane. Blocking buffer: 3% nonfat dry milk in TBST. Detection: ECL Basic Kit. Exposure time: 90s.



Immunohistochemistry - KISS1R Polyclonal Antibody

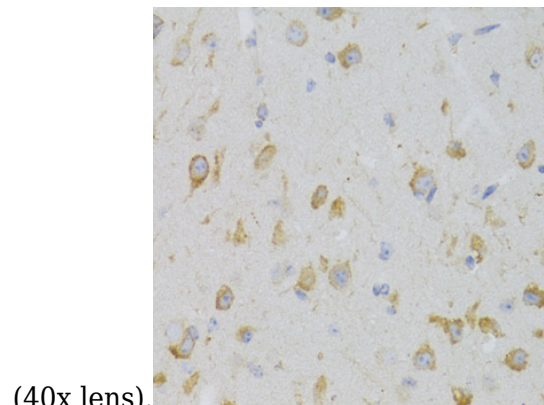
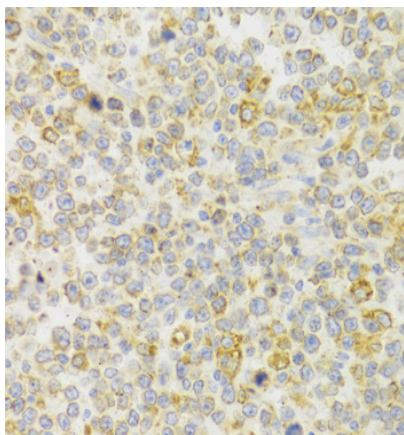
Immunohistochemistry of paraffin-embedded human gastric cancer using KISS1R Antibody at dilution of 1:200 (40x lens).

# KISS1R Polyclonal Antibody



Catalog Number: 163958

---



(40x lens).

Immunohistochemistry - KISS1R Polyclonal Antibody

Immunohistochemistry of paraffin-embedded human B cell lymphoma using KISS1R Antibody at dilution of 1:100 (40x lens).

Immunohistochemistry - KISS1R Polyclonal Antibody

Immunohistochemistry of paraffin-embedded rat brain using KISS1R Antibody at dilution of 1:100