

# GRM1 Polyclonal Antibody



Catalog Number: 163955

## Product name

GRM1 Polyclonal Antibody

## Specificity

Mouse

## Antibody description

Polyclonal antibody to GRM1

## Preparation

Antigen: A synthetic peptide of human GRM1

## Formulation

PBS with 0.02% sodium azide, 50% glycerol, pH7.3.

## Storage

Store at -20°C. Avoid freeze / thaw cycles.

## Clonality

Polyclonal

## Ig Type

Rabbit IgG

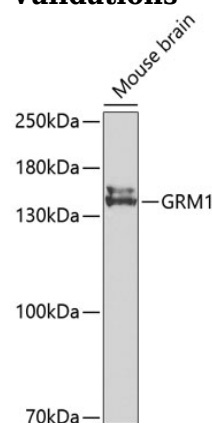
## Applications

WB

## Dilutions

WB 1:200 - 1:500

## Validations



Western blot - GRM1 Polyclonal Antibody

Western blot analysis of extracts of mouse brain, using GRM1 antibody at 1:500 dilution. Secondary antibody: HRP Goat Anti-Rabbit IgG (H+L) at 1:10000 dilution. Lysates/proteins: 25ug per lane. Blocking buffer: 3% nonfat dry milk in TBST. Detection: ECL Basic Kit. Exposure time: 90s.