

TRAP1 Polyclonal Antibody

Catalog Number: 163883

Product name

TRAP1 Polyclonal Antibody

Specificity

Human, Mouse, Rat

Antibody description

Polyclonal antibody to TRAP1

Preparation

Antigen: Recombinant protein of human TRAP1

Formulation

PBS with 0.02% sodium azide, 50% glycerol, pH7.3.

Storage

Store at -20°C. Avoid freeze / thaw cycles.

Clonality

Polyclonal

Ig Type

Rabbit IgG

Applications

WB, IHC, IF

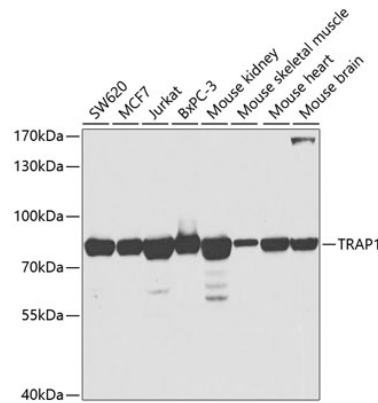
Dilutions

WB 1:500 - 1:2000

IHC 1:50 - 1:200

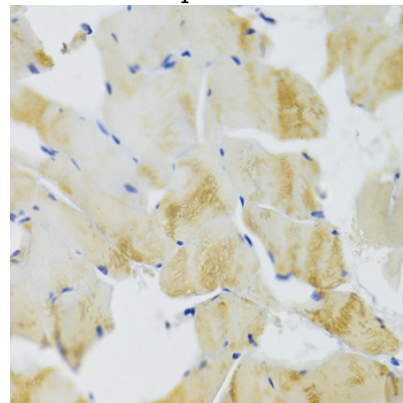
IF 1:50 - 1:200

Validations



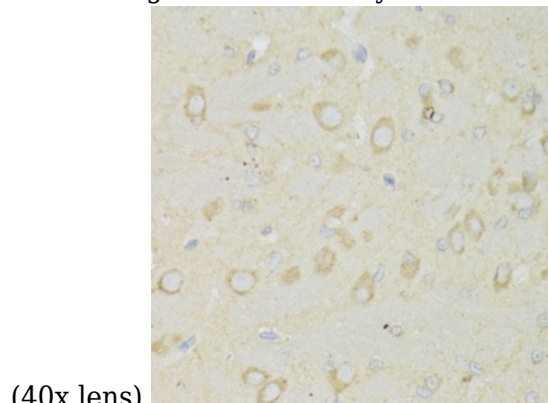
Western blot - TRAP1 Polyclonal Antibody

Western blot analysis of extracts of various cell lines, using TRAP1 antibody at 1:1000 dilution. Secondary antibody: HRP Goat Anti-Rabbit IgG (H+L) at 1:10000 dilution. Lysates/proteins: 25ug per lane. Blocking buffer: 3% nonfat dry milk in TBST. Detection: ECL Basic Kit. Exposure time: 10s.



Immunohistochemistry - TRAP1 Polyclonal Antibody

Immunohistochemistry of paraffin-embedded rat brain using TRAP1 Antibody at dilution of 1:200



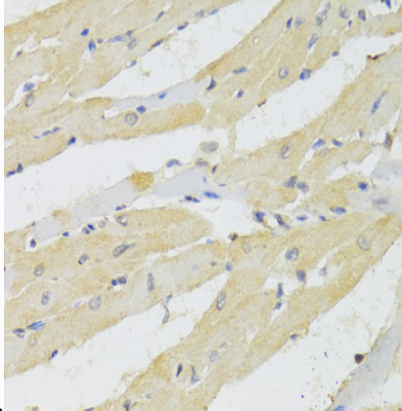
(40x lens).

TRAP1 Polyclonal Antibody

Catalog Number: 163883

Immunohistochemistry - TRAP1 Polyclonal Antibody

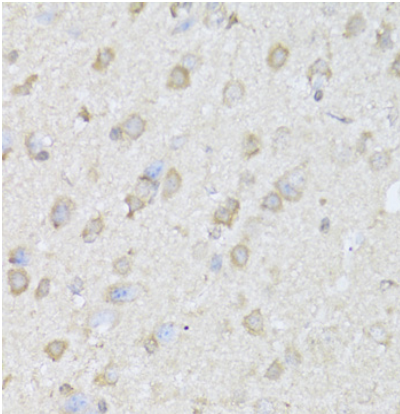
Immunohistochemistry of paraffin-embedded rat skeletal muscle using TRAP1 Antibody at dilution



of 1:100 (40x lens).

Immunohistochemistry - TRAP1 Polyclonal Antibody

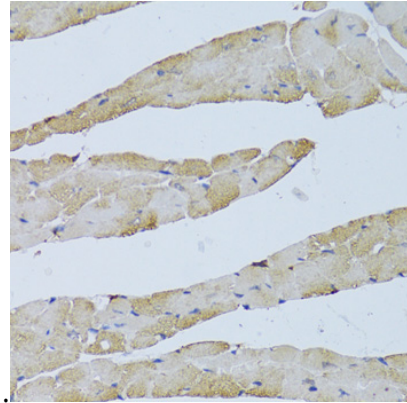
Immunohistochemistry of paraffin-embedded rat brain using TRAP1 Antibody at dilution of 1:100



(40x lens).

Immunohistochemistry - TRAP1 Polyclonal Antibody

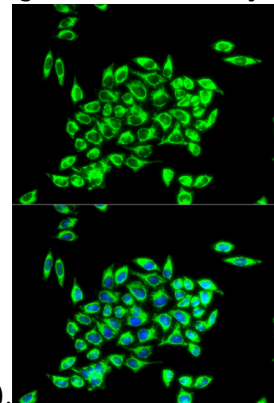
Immunohistochemistry of paraffin-embedded rat heart using TRAP1 Antibody at dilution of 1:100



(40x lens).

Immunohistochemistry - TRAP1 Polyclonal Antibody

Immunohistochemistry of paraffin-embedded mouse brain using TRAP1 Antibody at dilution of



1:100 (40x lens).

Immunohistochemistry - TRAP1 Polyclonal Antibody

Immunohistochemistry of paraffin-embedded mouse heart using TRAP1 Antibody at dilution of 1:100 (40x lens).