

BTG3 Polyclonal Antibody



Catalog Number: 163853

Product name

BTG3 Polyclonal Antibody

Specificity

Human, Mouse, Rat

Antibody description

Polyclonal antibody to BTG3

Preparation

Antigen: Recombinant protein of human BTG3

Formulation

PBS with 0.02% sodium azide, 50% glycerol, pH7.3.

Storage

Store at -20°C. Avoid freeze / thaw cycles.

Clonality

Polyclonal

Ig Type

Rabbit IgG

Applications

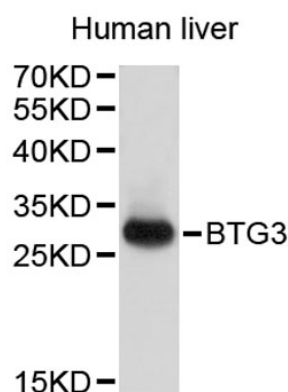
WB, IHC

Dilutions

WB 1:200 - 1:1000

IHC 1:25 - 1:100

Validations



Western blot - BTG3 Polyclonal Antibody

Western blot analysis of extracts of human liver, using BTG3 antibody .Secondary antibody: HRP Goat Anti-Rabbit IgG (H+L) at 1:10000 dilution.Lysates/proteins: 25ug per lane.Blocking buffer: 3% nonfat dry milk in TBST.