

SDHA Polyclonal Antibody

Catalog Number: 163839

Product name

SDHA Polyclonal Antibody

Specificity

Human, Mouse, Rat

Antibody description

Polyclonal antibody to SDHA

Preparation

Antigen: Recombinant fusion protein containing a sequence corresponding to amino acids 385-664 of human SDHA (NP_004159.2).

Formulation

PBS with 0.02% sodium azide, 50% glycerol, pH7.3.

Storage

Store at -20°C. Avoid freeze / thaw cycles.

Clonality

Polyclonal

Ig Type

Rabbit IgG

Applications

WB, IHC, IF

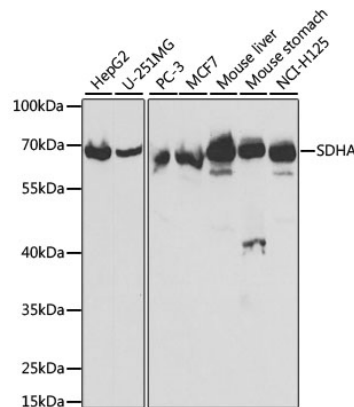
Dilutions

WB 1:500 - 1:2000

IHC 1:50 - 1:200

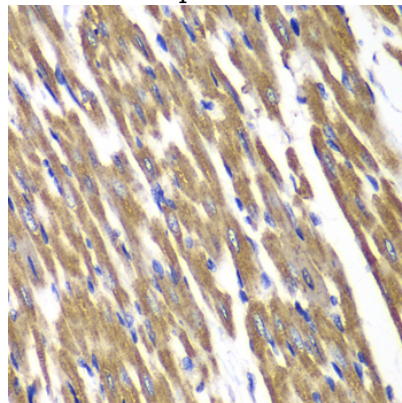
IF 1:10 - 1:100

Validations



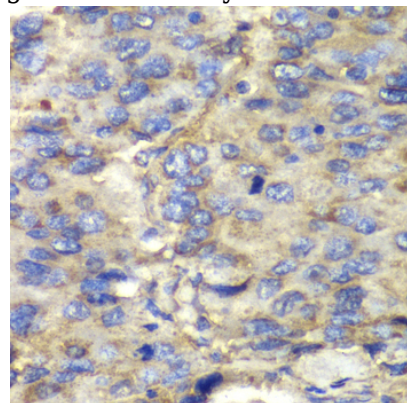
Western blot - SDHA Polyclonal Antibody

Western blot analysis of extracts of various cell lines, using SDHA antibody at 1:1000 dilution. Secondary antibody: HRP Goat Anti-Rabbit IgG (H+L) at 1:10000 dilution. Lysates/proteins: 25ug per lane. Blocking buffer: 3% nonfat dry milk in TBST. Detection: ECL Basic Kit. Exposure time: 3s.



Immunohistochemistry - SDHA Polyclonal Antibody

Immunohistochemistry of paraffin-embedded rat heart using SDHA antibody at dilution of 1:100



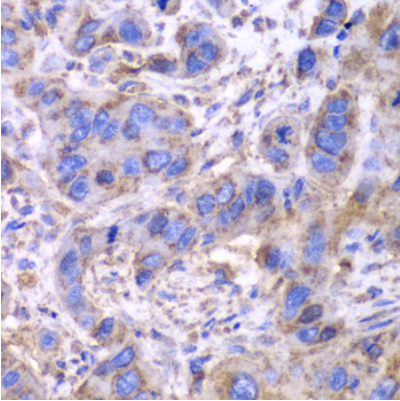
(40x lens).

SDHA Polyclonal Antibody

Catalog Number: 163839

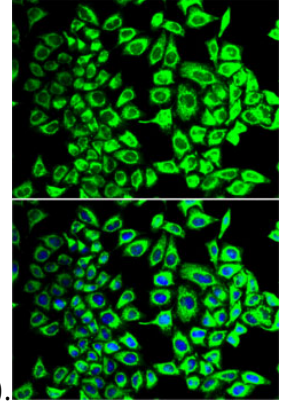
Immunohistochemistry - SDHA Polyclonal Antibody

Immunohistochemistry of paraffin-embedded human liver cancer using SDHA antibody at dilution of 1:100 (40x lens).



Immunohistochemistry - SDHA Polyclonal Antibody

Immunohistochemistry of paraffin-embedded human esophageal cancer using SDHA antibody at



dilution of 1:100 (40x lens).

Immunofluorescence - SDHA Polyclonal Antibody

Immunofluorescence analysis of HeLa cells using SDHA antibody . Blue: DAPI for nuclear staining.