

IRF2 Polyclonal Antibody



Catalog Number: 163829

Product name

IRF2 Polyclonal Antibody

Specificity

Human, Mouse, Rat

Antibody description

Polyclonal antibody to IRF2

Preparation

Antigen: Recombinant fusion protein containing a sequence corresponding to amino acids 120-349 of human IRF2 (NP_002190.2).

Formulation

PBS with 0.02% sodium azide, 50% glycerol, pH7.3.

Storage

Store at -20°C. Avoid freeze / thaw cycles.

Clonality

Polyclonal

Ig Type

Rabbit IgG

Applications

WB, IHC, IF

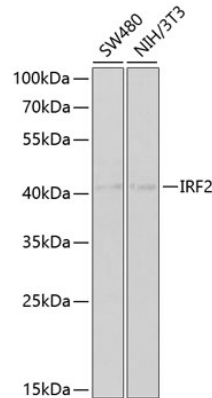
Dilutions

WB 1:500 - 1:2000

IHC 1:50 - 1:200

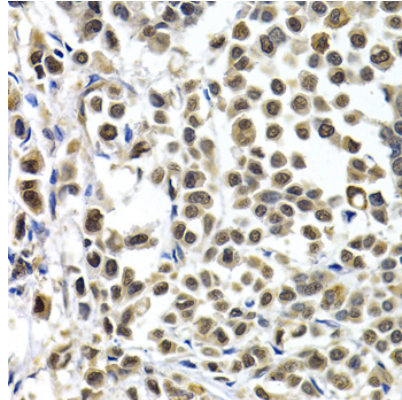
IF 1:50 - 1:100

Validations



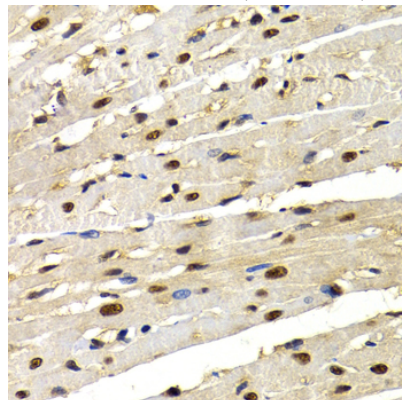
Western blot - IRF2 Polyclonal Antibody

Western blot analysis of extracts of various cell lines, using IRF2 antibody at 1:1000 dilution. Secondary antibody: HRP Goat Anti-Rabbit IgG (H+L) at 1:10000 dilution. Lysates/proteins: 25ug per lane. Blocking buffer: 3% nonfat dry milk in TBST.



Immunohistochemistry - IRF2 Polyclonal Antibody

Immunohistochemistry of paraffin-embedded human breast cancer using IRF2 antibody at dilution of 1:200 (40x lens).

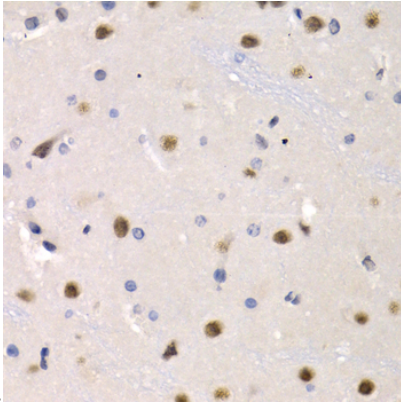


IRF2 Polyclonal Antibody

Catalog Number: 163829

Immunohistochemistry - IRF2 Polyclonal Antibody

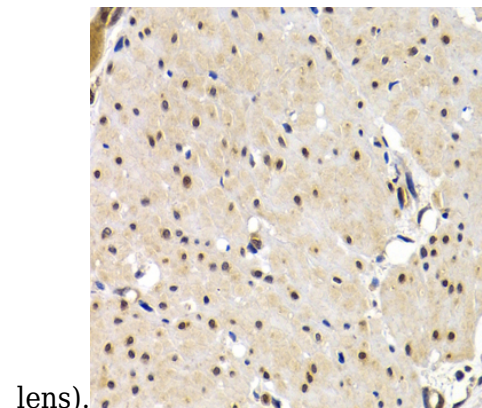
Immunohistochemistry of paraffin-embedded rat heart using IRF2 antibody at dilution of 1:200 (40x



lens).

Immunohistochemistry - IRF2 Polyclonal Antibody

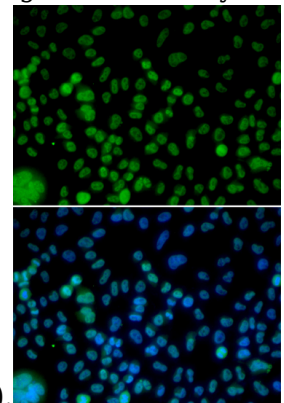
Immunohistochemistry of paraffin-embedded rat brain using IRF2 antibody at dilution of 1:200 (40x



lens).

Immunohistochemistry - IRF2 Polyclonal Antibody

Immunohistochemistry of paraffin-embedded human stomach cancer using IRF2 antibody at



dilution of 1:200 (40x lens).

Immunofluorescence - IRF2 Polyclonal Antibody
Immunofluorescence analysis of HeLa cells using IRF2 antibody . Blue: DAPI for nuclear staining.