

SNCG Polyclonal Antibody



Catalog Number: 163816

Product name

SNCG Polyclonal Antibody

Specificity

Human, Mouse

Antibody description

Polyclonal antibody to SNCG

Preparation

Antigen: Recombinant fusion protein containing a sequence corresponding to amino acids 1-127 of human SNCG (NP_003078.2).

Formulation

PBS with 0.02% sodium azide, 50% glycerol, pH7.3.

Storage

Store at -20°C. Avoid freeze / thaw cycles.

Clonality

Polyclonal

Ig Type

Rabbit IgG

Applications

WB, IHC, IF

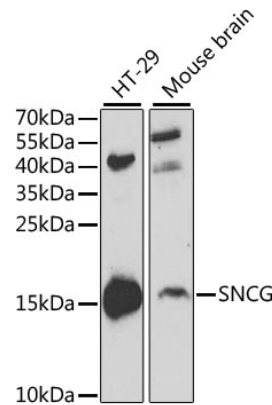
Dilutions

WB 1:500 - 1:2000

IHC 1:50 - 1:200

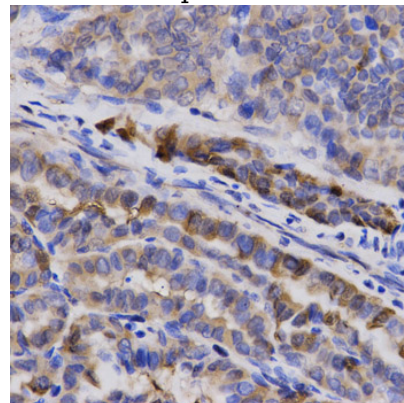
IF 1:50 - 1:200

Validations



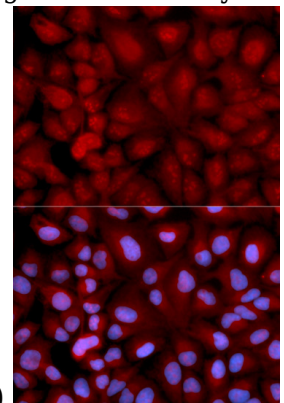
Western blot - SNCG Polyclonal Antibody

Western blot analysis of extracts of various cell lines, using SNCG antibody at 1:1000 dilution. Secondary antibody: HRP Goat Anti-Rabbit IgG (H+L) at 1:10000 dilution. Lysates/proteins: 25ug per lane. Blocking buffer: 3% nonfat dry milk in TBST. Detection: ECL Basic Kit. Exposure time: 60s.



Immunohistochemistry - SNCG Polyclonal Antibody

Immunohistochemistry of paraffin-embedded human thyroid cancer using SNCG antibody at



dilution of 1:200 (40x lens).

SNCG Polyclonal Antibody



Catalog Number: 163816

Immunofluorescence - SNCG Polyclonal Antibody

Immunofluorescence analysis of U2OS cells using SNCG antibody . Blue: DAPI for nuclear staining.