

# Pan Acetyl-Lysine pAb



Catalog Number: 163785

## Product name

Pan Acetyl-Lysine pAb

## Specificity

ALL

## Antibody description

Polyclonal antibody to Pan Acetyl-Lysine

## Preparation

Antigen: A synthetic peptide corresponding to a sequence containing acetylated K.

## Formulation

PBS with 0.02% sodium azide, 50% glycerol, pH7.3.

## Storage

Store at -20°C. Avoid freeze / thaw cycles.

## Clonality

Polyclonal

## Ig Type

Rabbit IgG

## Applications

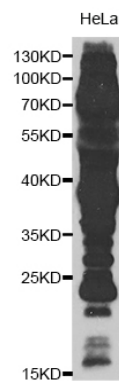
WB, IP

## Dilutions

WB 1:500 - 1:1000

IP 1:20 - 1:50

## Validations



Western blot - Pan Acetyl-Lysine pAb

Western blot analysis of extracts of HeLa cells, using Pan Acetyl-Lysine antibody .Secondary antibody: HRP Goat Anti-Rabbit IgG (H+L) at 1:10000 dilution.Lysates/proteins: 25ug per lane.Blocking buffer: 3% nonfat dry milk in TBST.