

# MYSM1 Polyclonal Antibody



Catalog Number: 163756

## Product name

MYSM1 Polyclonal Antibody

## Specificity

Human, Mouse

## Antibody description

Polyclonal antibody to MYSM1

## Preparation

Antigen: A synthetic peptide of human MYSM1

## Formulation

PBS with 0.02% sodium azide, pH7.3.

## Storage

Store at 4°C. Avoid freeze / thaw cycles.

## Clonality

Polyclonal

## Ig Type

Rabbit IgG

## Applications

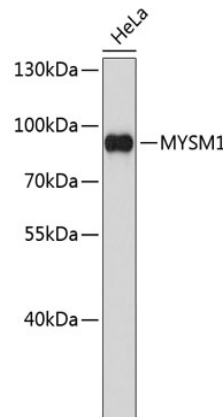
WB, FC

## Dilutions

WB 1:500 - 1:1000

FC 1:20 - 1:50

## Validations



Western blot - MYSM1 Polyclonal Antibody

Western blot analysis of extracts of HeLa cells, using MYSM1 antibody .Secondary antibody: HRP Goat Anti-Rabbit IgG (H+L) at 1:10000 dilution.Lysates/proteins: 25ug per lane.Blocking buffer: 3% nonfat dry milk in TBST.