

# MTA2 Polyclonal Antibody



Catalog Number: 163737

## Product name

MTA2 Polyclonal Antibody

## Specificity

Human, Mouse, Rat

## Antibody description

Polyclonal antibody to MTA2

## Preparation

Antigen: Recombinant fusion protein containing a sequence corresponding to amino acids 60-180 of human MTA2 (NP\_004730.2).

## Formulation

PBS with 0.02% sodium azide, 50% glycerol, pH7.3.

## Storage

Store at -20°C. Avoid freeze / thaw cycles.

## Clonality

Polyclonal

## Ig Type

Rabbit IgG

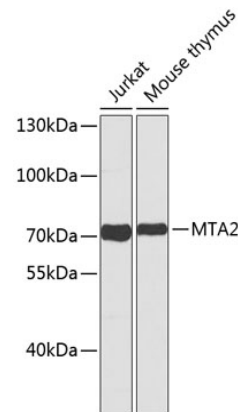
## Applications

WB

## Dilutions

WB 1:500 - 1:2000

## Validations



Western blot - MTA2 Polyclonal Antibody

Western blot analysis of extracts of various cell lines, using MTA2 antibody .