

MBD2 Polyclonal Antibody



Catalog Number: 163736

Product name

MBD2 Polyclonal Antibody

Specificity

Human, Mouse, Rat

Antibody description

Polyclonal antibody to MBD2

Preparation

Antigen: Recombinant fusion protein containing a sequence corresponding to amino acids 202-411 of human MBD2 (NP_003918.1).

Formulation

PBS with 0.02% sodium azide, 50% glycerol, pH7.3.

Storage

Store at -20°C. Avoid freeze / thaw cycles.

Clonality

Polyclonal

Ig Type

Rabbit IgG

Applications

WB, IHC, IF

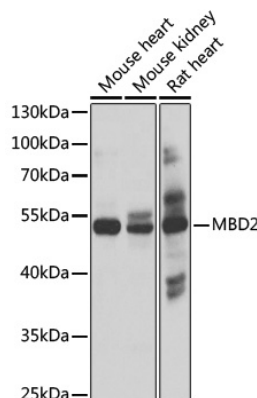
Dilutions

WB 1:200 - 1:2000

IHC 1:50 - 1:200

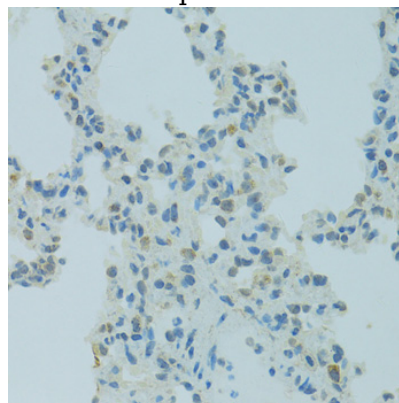
IF 1:50 - 1:200

Validations



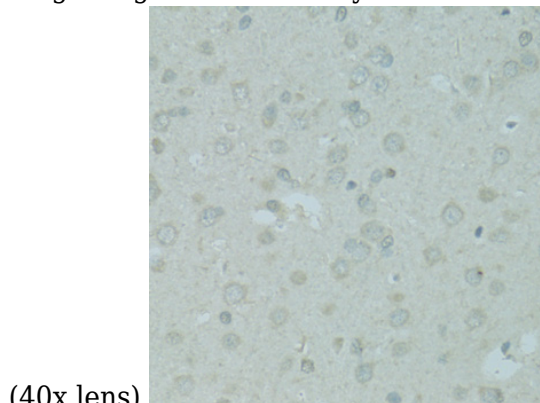
Western blot - MBD2 Polyclonal Antibody

Western blot analysis of extracts of various cell lines, using MBD2 antibody at 1:1000 dilution. Secondary antibody: HRP Goat Anti-Rabbit IgG (H+L) at 1:10000 dilution. Lysates/proteins: 25ug per lane. Blocking buffer: 3% nonfat dry milk in TBST. Detection: ECL Basic Kit. Exposure time: 1s.



Immunohistochemistry - MBD2 Polyclonal Antibody

Immunohistochemistry of paraffin-embedded rat lung using MBD2 antibody at dilution of 1:100



(40x lens).

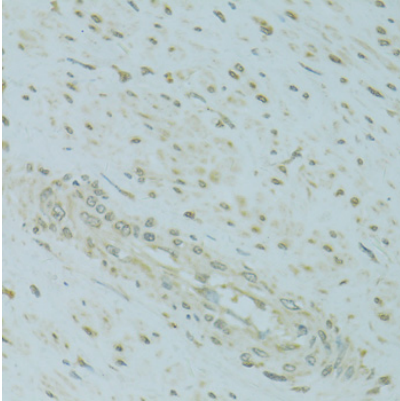
MBD2 Polyclonal Antibody



Catalog Number: 163736

Immunohistochemistry - MBD2 Polyclonal Antibody

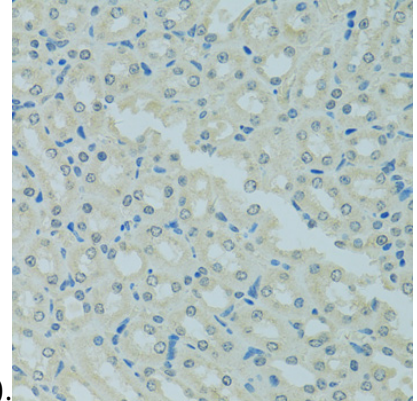
Immunohistochemistry of paraffin-embedded rat brain using MBD2 antibody at dilution of 1:100



(40x lens).

Immunohistochemistry - MBD2 Polyclonal Antibody

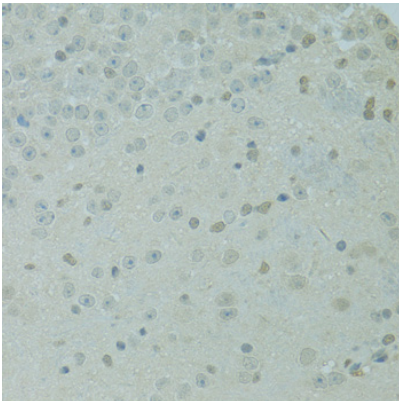
Immunohistochemistry of paraffin-embedded mouse brain using MBD2 antibody at dilution of



1:100 (40x lens).

Immunohistochemistry - MBD2 Polyclonal Antibody

Immunohistochemistry of paraffin-embedded human uterine cancer using MBD2 antibody at dilution of 1:100 (40x lens).



Immunohistochemistry - MBD2 Polyclonal Antibody

Immunohistochemistry of paraffin-embedded mouse kidney using MBD2 antibody at dilution of 1:100 (40x lens).