

KAT2A Polyclonal Antibody



Catalog Number: 163734

Product name

KAT2A Polyclonal Antibody

Specificity

Human, Mouse, Rat

Antibody description

Polyclonal antibody to KAT2A

Preparation

Antigen: Recombinant fusion protein containing a sequence corresponding to amino acids 1-100 of human KAT2A (NP_066564.2).

Formulation

PBS with 0.02% sodium azide, 50% glycerol, pH7.3.

Storage

Store at -20°C. Avoid freeze / thaw cycles.

Clonality

Polyclonal

Ig Type

Rabbit IgG

Applications

WB, IHC, IF

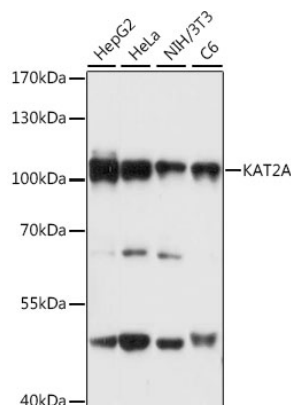
Dilutions

WB 1:200 - 1:2000

IHC 1:50 - 1:200

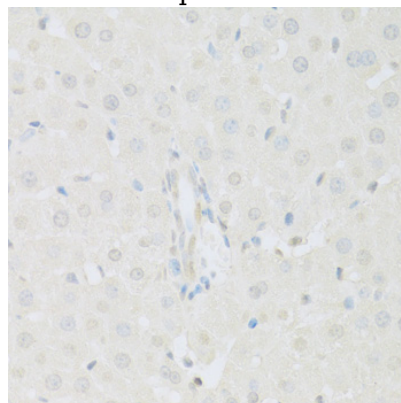
IF 1:50 - 1:200

Validations



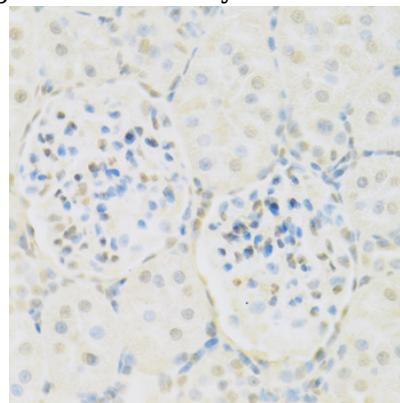
Western blot - KAT2A Polyclonal Antibody

Western blot analysis of extracts of various cell lines, using KAT2A antibody at 1:3000 dilution. Secondary antibody: HRP Goat Anti-Rabbit IgG (H+L) at 1:10000 dilution. Lysates/proteins: 25ug per lane. Blocking buffer: 3% nonfat dry milk in TBST. Detection: ECL Basic Kit. Exposure time: 1s.



Immunohistochemistry - KAT2A Polyclonal Antibody

Immunohistochemistry of paraffin-embedded rat liver using KAT2A antibody at dilution of 1:100



(40x lens).

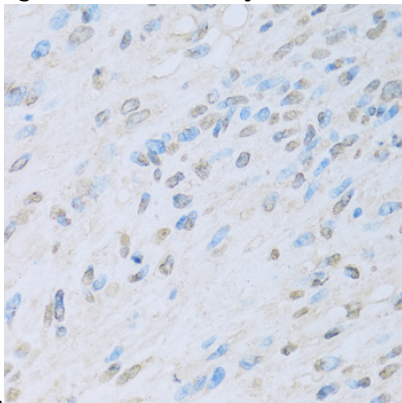
KAT2A Polyclonal Antibody



Catalog Number: 163734

Immunohistochemistry - KAT2A Polyclonal Antibody

Immunohistochemistry of paraffin-embedded rat kidney using KAT2A antibody at dilution of 1:100



(40x lens).

Immunohistochemistry - KAT2A Polyclonal Antibody

Immunohistochemistry of paraffin-embedded human liver cancer using KAT2A antibody at dilution of 1:100 (40x lens).