

# CHD3 Polyclonal Antibody



Catalog Number: 163732

## Product name

CHD3 Polyclonal Antibody

## Specificity

Human, Mouse, Rat

## Antibody description

Polyclonal antibody to CHD3

## Preparation

Antigen: A synthetic peptide corresponding to a sequence within amino acids 1900-2000 of human CHD3 (NP\_001005273.1).

## Formulation

PBS with 0.02% sodium azide, 50% glycerol, pH7.3.

## Storage

Store at -20°C. Avoid freeze / thaw cycles.

## Clonality

Polyclonal

## Ig Type

Rabbit IgG

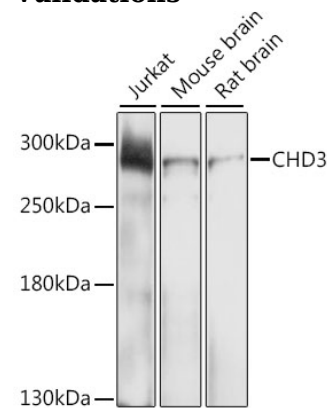
## Applications

WB

## Dilutions

WB 1:200 - 1:1000

## Validations



## Western blot - CHD3 Polyclonal Antibody

Western blot analysis of extracts of various cell lines, using CHD3 antibody at 1:1000 dilution. Secondary antibody: HRP Goat Anti-Rabbit IgG (H+L) at 1:10000 dilution. Lysates/proteins: 25ug per lane. Blocking buffer: 3% nonfat dry milk in TBST. Detection: ECL Enhanced Kit. Exposure time: 30s.