

XRCC3 Polyclonal Antibody



Catalog Number: 163703

Product name

XRCC3 Polyclonal Antibody

Specificity

Human, Mouse, Rat

Antibody description

Polyclonal antibody to XRCC3

Preparation

Antigen: Recombinant fusion protein containing a sequence corresponding to amino acids 62-346 of human XRCC3 (NP_001093588.1).

Formulation

PBS with 0.02% sodium azide, 50% glycerol, pH7.3.

Storage

Store at -20°C. Avoid freeze / thaw cycles.

Clonality

Polyclonal

Ig Type

Rabbit IgG

Applications

WB, IHC, IF

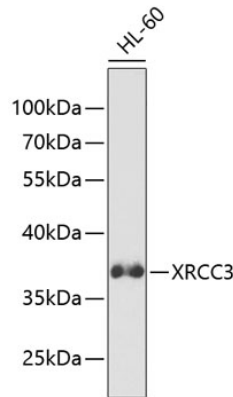
Dilutions

WB 1:500 - 1:2000

IHC 1:50 - 1:200

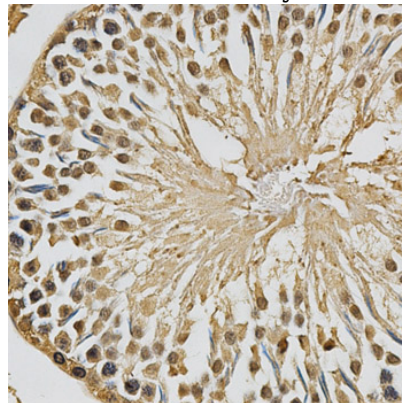
IF 1:50 - 1:200

Validations



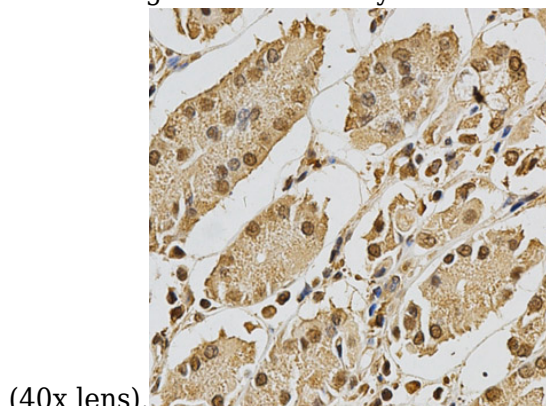
Western blot - XRCC3 Polyclonal Antibody

Western blot analysis of extracts of HL-60 cells, using XRCC3 antibody at 1:1000 dilution. Secondary antibody: HRP Goat Anti-Rabbit IgG (H+L) at 1:10000 dilution. Lysates/proteins: 25ug per lane. Blocking buffer: 3% nonfat dry milk in TBST.



Immunohistochemistry - XRCC3 Polyclonal Antibody

Immunohistochemistry of paraffin-embedded rat testis using XRCC3 antibody at dilution of 1:200



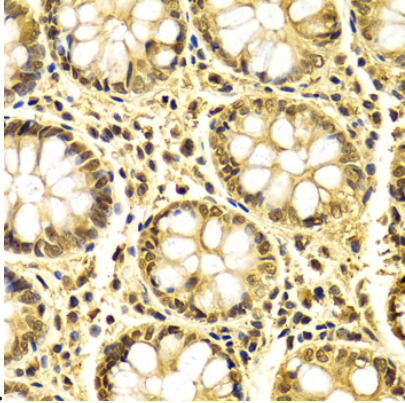
(40x lens).

XRCC3 Polyclonal Antibody

Catalog Number: 163703

Immunohistochemistry - XRCC3 Polyclonal Antibody

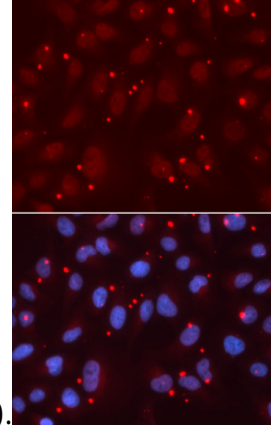
Immunohistochemistry of paraffin-embedded human stomach using XRCC3 antibody at dilution



of 1:200 (40x lens).

Immunohistochemistry - XRCC3 Polyclonal Antibody

Immunohistochemistry of paraffin-embedded human colon using XRCC3 antibody at dilution of



1:100 (40x lens).

Immunofluorescence - XRCC3 Polyclonal Antibody

Immunofluorescence analysis of U2OS cells using XRCC3 antibody . Blue: DAPI for nuclear staining.