

# AP2B1 Polyclonal Antibody

Catalog Number: 163651

## Product name

AP2B1 Polyclonal Antibody

## Specificity

Human, Mouse

## Antibody description

Polyclonal antibody to AP2B1

## Preparation

Antigen: Recombinant fusion protein containing a sequence corresponding to amino acids 752-951 of human AP2B1 (NP\_001025177.1).

## Formulation

PBS with 0.02% sodium azide, 50% glycerol, pH7.3.

## Storage

Store at -20°C. Avoid freeze / thaw cycles.

## Clonality

Polyclonal

## Ig Type

Rabbit IgG

## Applications

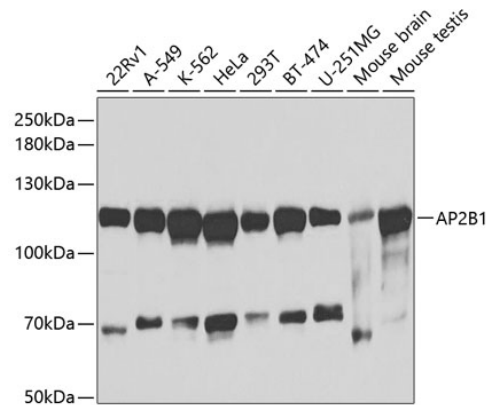
WB, IHC

## Dilutions

WB 1:500 - 1:2000

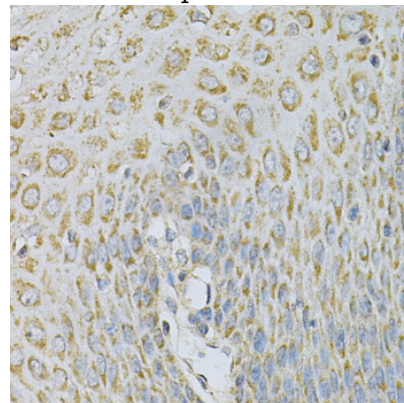
IHC 1:50 - 1:200

## Validations



Western blot - AP2B1 Polyclonal Antibody

Western blot analysis of extracts of various cell lines, using AP2B1 antibody at 1:1000 dilution. Secondary antibody: HRP Goat Anti-Rabbit IgG (H+L) at 1:10000 dilution. Lysates/proteins: 25ug per lane. Blocking buffer: 3% nonfat dry milk in TBST. Detection: ECL Basic Kit. Exposure time: 30s.



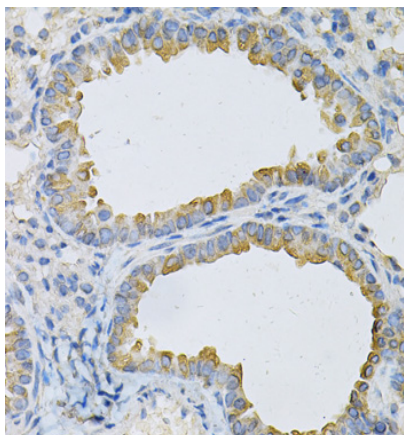
Immunohistochemistry - AP2B1 Polyclonal Antibody

Immunohistochemistry of paraffin-embedded human esophagus using AP2B1 Antibody at dilution of 1:100 (40x lens).

# AP2B1 Polyclonal Antibody

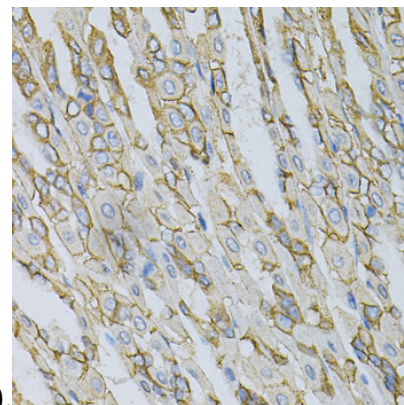
Catalog Number: 163651

---



Immunohistochemistry - AP2B1 Polyclonal Antibody

Immunohistochemistry of paraffin-embedded mouse lung using AP2B1 Antibody at dilution of



1:100 (40x lens).

Immunohistochemistry - AP2B1 Polyclonal Antibody

Immunohistochemistry of paraffin-embedded mouse stomach using AP2B1 Antibody at dilution of 1:100 (40x lens).