

PSMC3 Polyclonal Antibody



Catalog Number: 163648

Product name

PSMC3 Polyclonal Antibody

Specificity

Human, Mouse, Rat

Antibody description

Polyclonal antibody to PSMC3

Preparation

Antigen: Recombinant fusion protein containing a sequence corresponding to amino acids 1-180 of human PSMC3 (NP_002799.3).

Formulation

PBS with 0.02% sodium azide, 50% glycerol, pH7.3.

Storage

Store at -20°C. Avoid freeze / thaw cycles.

Clonality

Polyclonal

Ig Type

Rabbit IgG

Applications

WB, IHC, IF

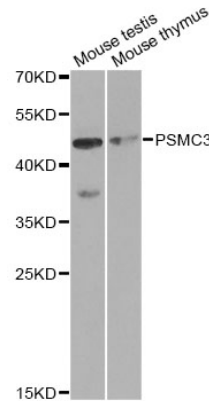
Dilutions

WB 1:500 - 1:2000

IHC 1:50 - 1:200

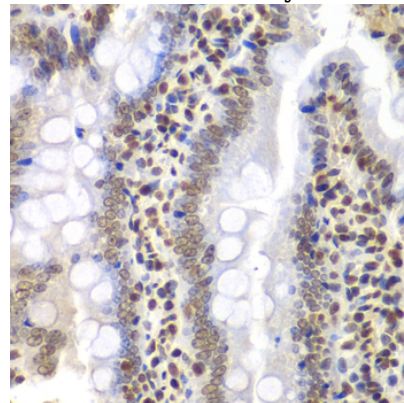
IF 1:50 - 1:200

Validations



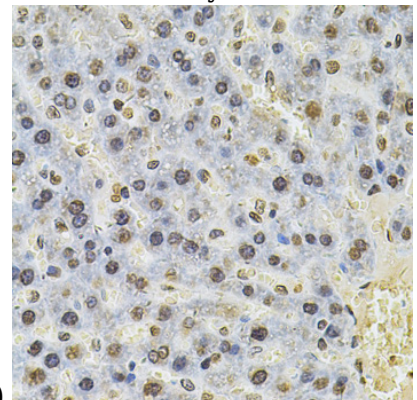
Western blot - PSMC3 Polyclonal Antibody

Western blot analysis of extracts of various cell lines, using PSMC3 antibody at 1:1000 dilution. Secondary antibody: HRP Goat Anti-Rabbit IgG (H+L) at 1:10000 dilution. Lysates/proteins: 25ug per lane. Blocking buffer: 3% nonfat dry milk in TBST.



Immunohistochemistry - PSMC3 Polyclonal Antibody

Immunohistochemistry of paraffin-embedded rat intestine using PSMC3 Antibody at dilution of



1:200 (40x lens).

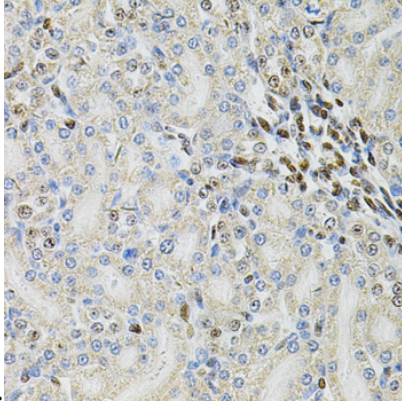
PSMC3 Polyclonal Antibody



Catalog Number: 163648

Immunohistochemistry - PSMC3 Polyclonal Antibody

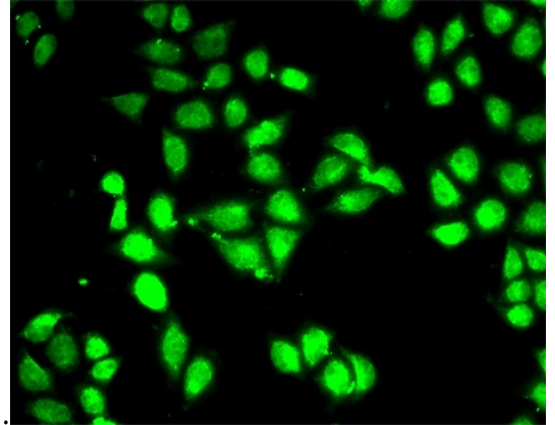
Immunohistochemistry of paraffin-embedded rat liver using PSMC3 Antibody at dilution of 1:100



(40x lens).

Immunohistochemistry - PSMC3 Polyclonal Antibody

Immunohistochemistry of paraffin-embedded rat kidney using PSMC3 Antibody at dilution of 1:100



(40x lens).

Immunofluorescence - PSMC3 Polyclonal Antibody

Immunofluorescence analysis of MCF-7 cells using PSMC3 antibody .