

CD151 Polyclonal Antibody



Catalog Number: 163625

Product name

CD151 Polyclonal Antibody

Specificity

Human, Mouse, Rat

Antibody description

Polyclonal antibody to CD151

Preparation

Antigen: Recombinant fusion protein containing a sequence corresponding to amino acids 113-221 of human CD151 (NP_001034579.1).

Formulation

PBS with 0.02% sodium azide, 50% glycerol, pH7.3.

Storage

Store at -20°C. Avoid freeze / thaw cycles.

Clonality

Polyclonal

Ig Type

Rabbit IgG

Applications

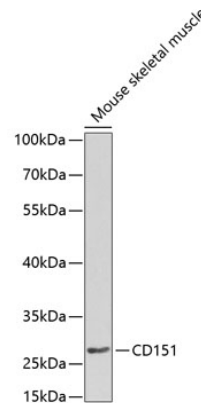
WB, IHC

Dilutions

WB 1:500 - 1:2000

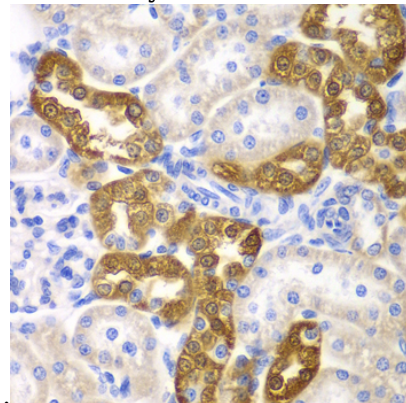
IHC 1:50 - 1:200

Validations



Western blot - CD151 Polyclonal Antibody

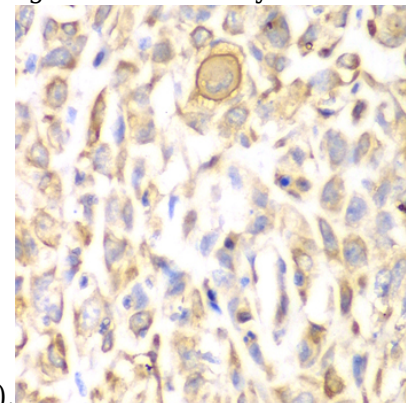
Western blot analysis of extracts of mouse skeletal muscle, using CD151 Antibody at 1:1000 dilution. Secondary antibody: HRP Goat Anti-Rabbit IgG (H+L) at 1:10000 dilution. Lysates/proteins: 25ug per lane. Blocking buffer: 3% nonfat dry milk in TBST. Detection: ECL



Basic Kit .

Immunohistochemistry - CD151 Polyclonal Antibody

Immunohistochemistry of paraffin-embedded rat kidney using CD151 antibody at dilution of 1:200



(40x lens).

CD151 Polyclonal Antibody



Catalog Number: 163625

Immunohistochemistry - CD151 Polyclonal Antibody

Immunohistochemistry of paraffin-embedded human lung cancer using CD151 antibody at dilution of 1:200 (40x lens).