

DKC1 Polyclonal Antibody



Catalog Number: 163604

Product name

DKC1 Polyclonal Antibody

Specificity

Human, Mouse, Rat

Antibody description

Polyclonal antibody to DKC1

Preparation

Antigen: Recombinant fusion protein containing a sequence corresponding to amino acids 245-514 of human DKC1 (NP_001354.1).

Formulation

PBS with 0.02% sodium azide, 50% glycerol, pH7.3.

Storage

Store at -20°C. Avoid freeze / thaw cycles.

Clonality

Polyclonal

Ig Type

Rabbit IgG

Applications

WB, IHC, IF

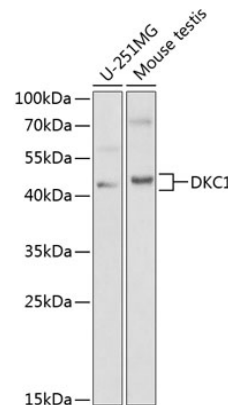
Dilutions

WB 1:500 - 1:2000

IHC 1:50 - 1:200

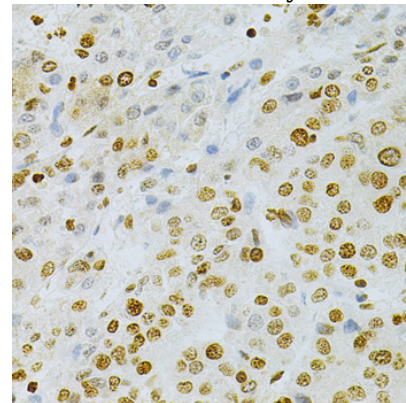
IF 1:50 - 1:200

Validations



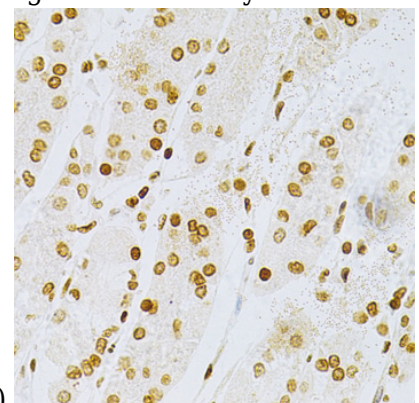
Western blot - DKC1 Polyclonal Antibody

Western blot analysis of extracts of various cell lines, using DKC1 antibody at 1:1000 dilution. Secondary antibody: HRP Goat Anti-Rabbit IgG (H+L) at 1:10000 dilution. Lysates/proteins: 25ug per lane. Blocking buffer: 3% nonfat dry milk in TBST.



Immunohistochemistry - DKC1 Polyclonal Antibody

Immunohistochemistry of paraffin-embedded human colon using DKC1 Antibody at dilution of



1:100 (40x lens).

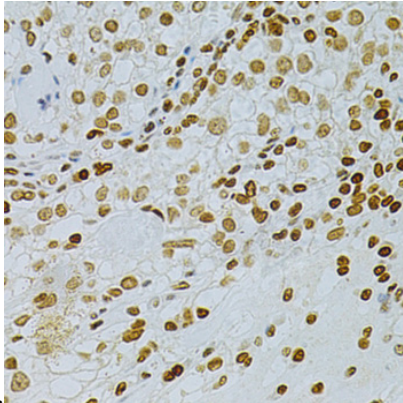
DKC1 Polyclonal Antibody



Catalog Number: 163604

Immunohistochemistry - DKC1 Polyclonal Antibody

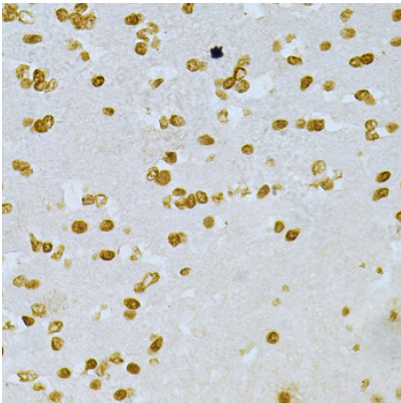
Immunohistochemistry of paraffin-embedded human esophagus using DKC1 Antibody at dilution



of 1:100 (40x lens).

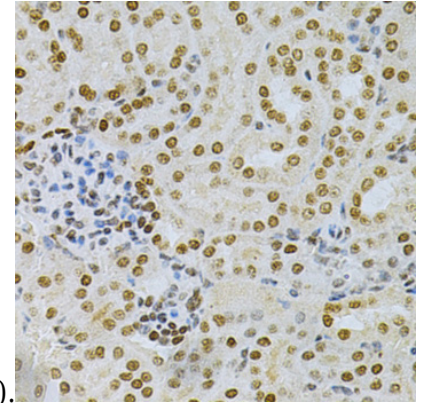
Immunohistochemistry - DKC1 Polyclonal Antibody

Immunohistochemistry of paraffin-embedded human esophageal cancer using DKC1 Antibody at dilution of 1:100 (40x lens).



Immunohistochemistry - DKC1 Polyclonal Antibody

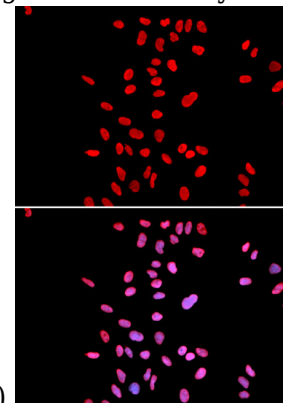
Immunohistochemistry of paraffin-embedded human stomach using DKC1 Antibody at dilution



of 1:100 (40x lens).

Immunohistochemistry - DKC1 Polyclonal Antibody

Immunohistochemistry of paraffin-embedded human gastric cancer using DKC1 Antibody at



dilution of 1:100 (40x lens).

Immunohistochemistry - DKC1 Polyclonal Antibody

Immunohistochemistry of paraffin-embedded human kidney using DKC1 Antibody at dilution of 1:100 (40x lens).