

# SDC4 Polyclonal Antibody



Catalog Number: 163590

## Product name

SDC4 Polyclonal Antibody

## Specificity

Human, Mouse, Rat

## Antibody description

Polyclonal antibody to SDC4

## Preparation

Antigen: Recombinant fusion protein containing a sequence corresponding to amino acids 19-145 of human SDC4 (NP\_002990.2).

## Formulation

PBS with 0.02% sodium azide, 50% glycerol, pH7.3.

## Storage

Store at -20°C. Avoid freeze / thaw cycles.

## Clonality

Polyclonal

## Ig Type

Rabbit IgG

## Applications

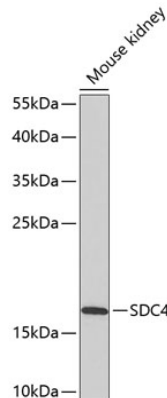
WB, IHC

## Dilutions

WB 1:500 - 1:2000

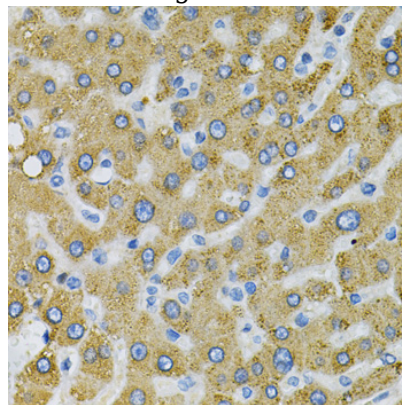
IHC 1:50 - 1:200

## Validations



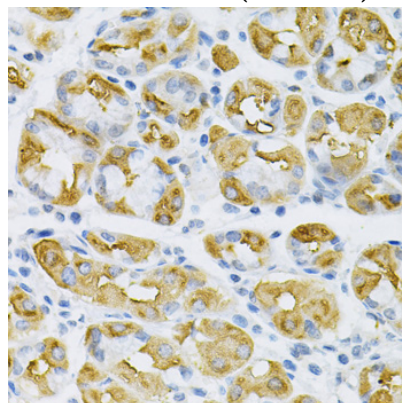
Western blot - SDC4 Polyclonal Antibody

Western blot analysis of extracts of mouse kidney, using SDC4 antibody at 1:1000 dilution. Secondary antibody: HRP Goat Anti-Rabbit IgG (H+L) at 1:10000 dilution. Lysates/proteins: 25ug per lane. Blocking buffer: 3% nonfat dry milk in TBST.



Immunohistochemistry - SDC4 Polyclonal Antibody

Immunohistochemistry of paraffin-embedded human liver injury using SDC4 Antibody at dilution of 1:100 (40x lens).



Immunohistochemistry - SDC4 Polyclonal Antibody

# SDC4 Polyclonal Antibody



Catalog Number: 163590

---

Immunohistochemistry of paraffin-embedded

human stomach using SDC4 Antibody at dilution of 1:100 (40x lens).