

CSNK1E Polyclonal Antibody



Catalog Number: 163561

Product name

CSNK1E Polyclonal Antibody

Specificity

Human, Mouse, Rat

Antibody description

Polyclonal antibody to CSNK1E

Preparation

Antigen: Recombinant fusion protein containing a sequence corresponding to amino acids 247-416 of human CSNK1E (NP_689407.1).

Formulation

PBS with 0.02% sodium azide, 50% glycerol, pH7.3.

Storage

Store at -20°C. Avoid freeze / thaw cycles.

Clonality

Polyclonal

Ig Type

Rabbit IgG

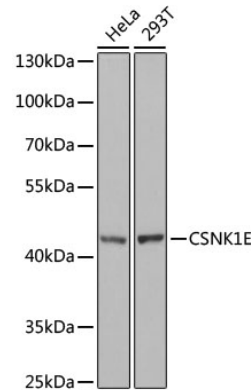
Applications

WB, IHC, IF, IP

Dilutions

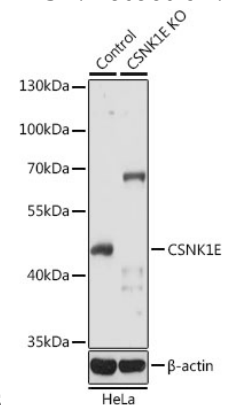
WB 1:500 - 1:2000
IHC 1:50 - 1:200
IF 1:50 - 1:200
IP 1:50 - 1:100

Validations



Western blot - CSNK1E Polyclonal Antibody

Western blot analysis of extracts of various cell lines, using CSNK1E antibody at 1:1000 dilution. Secondary antibody: HRP Goat Anti-Rabbit IgG (H+L) at 1:10000 dilution. Lysates/proteins: 25ug per lane. Blocking buffer: 3% nonfat dry milk in TBST. Detection: ECL



Basic Kit .Exposure time: 90s.

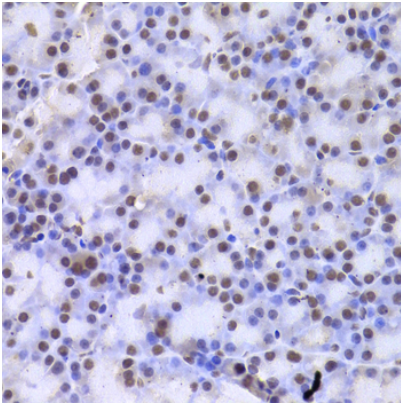
Western blot - CSNK1E Polyclonal Antibody

Western blot analysis of extracts from normal (control) and CSNK1E knockout HeLa cells, using CSNK1E antibody at 1:1000 dilution. Secondary antibody: HRP Goat Anti-Rabbit IgG (H+L) at 1:10000 dilution. Lysates/proteins: 25ug per lane. Blocking buffer: 3% nonfat dry milk in TBST. Detection: ECL Basic Kit .Exposure time: 5s.

CSNK1E Polyclonal Antibody

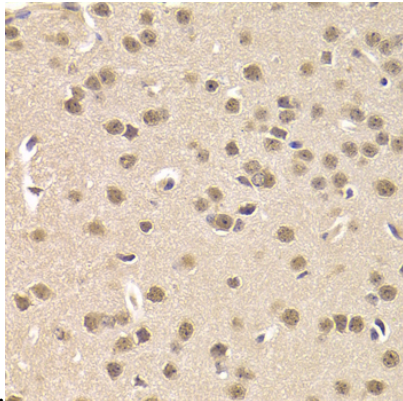


Catalog Number: 163561



Immunohistochemistry - CSNK1E Polyclonal Antibody

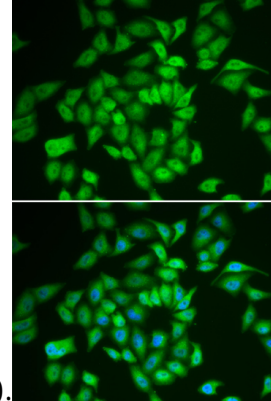
Immunohistochemistry of paraffin-embedded rat pancreas using CSNK1E Antibody at dilution of



1:200 (40x lens).

Immunohistochemistry - CSNK1E Polyclonal Antibody

Immunohistochemistry of paraffin-embedded mouse brain using CSNK1E Antibody at dilution of



1:200 (40x lens).

Immunofluorescence - CSNK1E Polyclonal Antibody

Immunofluorescence analysis of HeLa cells using CSNK1E antibody . Blue: DAPI for nuclear staining.