

# RPL35A Polyclonal Antibody



Catalog Number: 163559

## Product name

RPL35A Polyclonal Antibody

## Specificity

Mouse

## Antibody description

Polyclonal antibody to RPL35A

## Preparation

Antigen: Recombinant fusion protein containing a sequence corresponding to amino acids 10-90 of human RPL35A (NP\_000987.2).

## Formulation

PBS with 0.02% sodium azide, 50% glycerol, pH7.3.

## Storage

Store at -20°C. Avoid freeze / thaw cycles.

## Clonality

Polyclonal

## Ig Type

Rabbit IgG

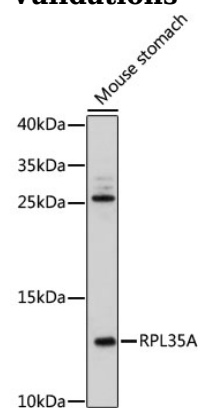
## Applications

WB

## Dilutions

WB 1:500 - 1:2000

## Validations



Western blot - RPL35A Polyclonal Antibody

Western blot analysis of extracts of mouse stomach, using RPL35A antibody at 1:500 dilution. Secondary antibody: HRP Goat Anti-Rabbit IgG (H+L) at 1:10000 dilution. Lysates/proteins: 25ug per lane. Blocking buffer: 3% nonfat dry milk in TBST. Detection: ECL Enhanced Kit. Exposure time: 3min.