

POLR2C Polyclonal Antibody



Catalog Number: 163542

Product name

POLR2C Polyclonal Antibody

Specificity

Human, Mouse

Antibody description

Polyclonal antibody to POLR2C

Preparation

Antigen: Recombinant fusion protein containing a sequence corresponding to amino acids 1-275 of human POLR2C (NP_116558.1).

Formulation

PBS with 0.02% sodium azide, 50% glycerol, pH7.3.

Storage

Store at -20°C. Avoid freeze / thaw cycles.

Clonality

Polyclonal

Ig Type

Rabbit IgG

Applications

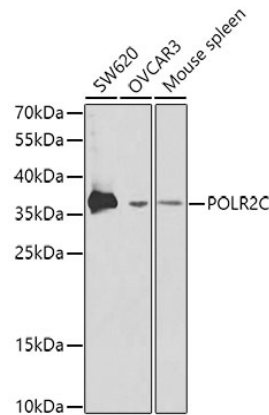
WB, IP

Dilutions

WB 1:500 - 1:2000

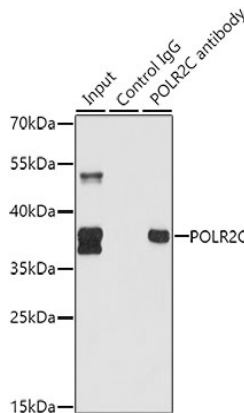
IP 1:20 - 1:50

Validations



Western blot - POLR2C Polyclonal Antibody

Western blot analysis of extracts of various cell lines, using POLR2C antibody at 1:1000 dilution. Secondary antibody: HRP Goat Anti-Rabbit IgG (H+L) at 1:10000 dilution. Lysates/proteins: 25ug per lane. Blocking buffer: 3% nonfat dry milk in TBST.



Immunoprecipitation - POLR2C Polyclonal Antibody

Immunoprecipitation analysis of 150ug extracts of SW620 cells using 3ug POLR2C antibody. Western blot was performed from the immunoprecipitate using POLR2C antibody at a dilution of 1:500.