

# AKAP8 Polyclonal Antibody



Catalog Number: 163485

## Product name

AKAP8 Polyclonal Antibody

## Specificity

Human, Rat

## Antibody description

Polyclonal antibody to AKAP8

## Preparation

Antigen: A synthetic peptide of human AKAP8

## Formulation

PBS with 0.02% sodium azide, 50% glycerol, pH7.3.

## Storage

Store at -20°C. Avoid freeze / thaw cycles.

## Clonality

Polyclonal

## Ig Type

Rabbit IgG

## Applications

WB, IHC, IF

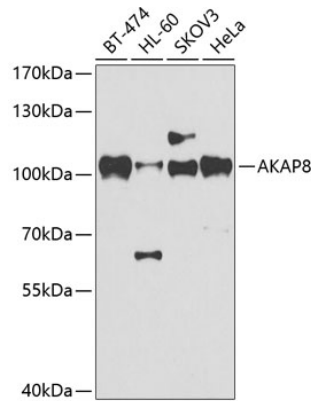
## Dilutions

WB 1:500 - 1:2000

IHC 1:100 - 1:200

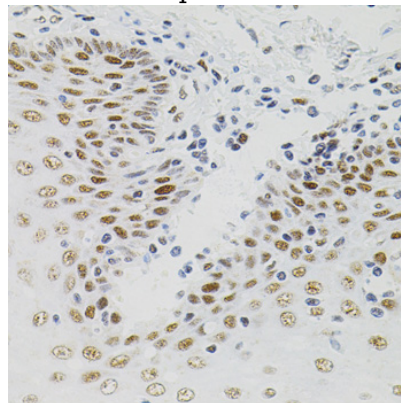
IF 1:50 - 1:200

## Validations



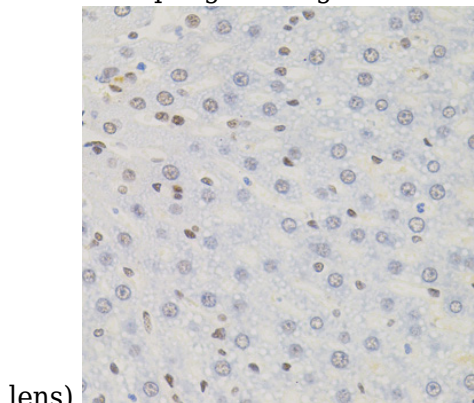
Western blot - AKAP8 Polyclonal Antibody

Western blot analysis of extracts of various cell lines, using AKAP8 antibody at 1:500 dilution. Secondary antibody: HRP Goat Anti-Rabbit IgG (H+L) at 1:10000 dilution. Lysates/proteins: 25ug per lane. Blocking buffer: 3% nonfat dry milk in TBST. Detection: ECL Basic Kit. Exposure time: 90s.



Immunohistochemistry - AKAP8 Polyclonal Antibody

Immunohistochemistry of paraffin-embedded human esophagus using AKAP8 antibody (40x



lens).

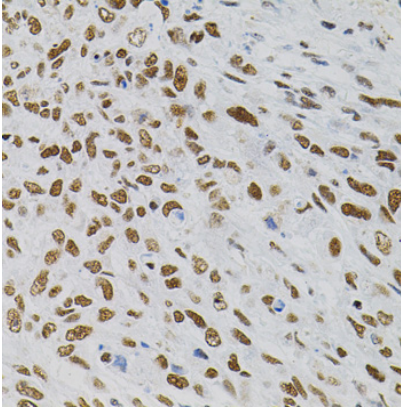
# AKAP8 Polyclonal Antibody

Catalog Number: 163485

---

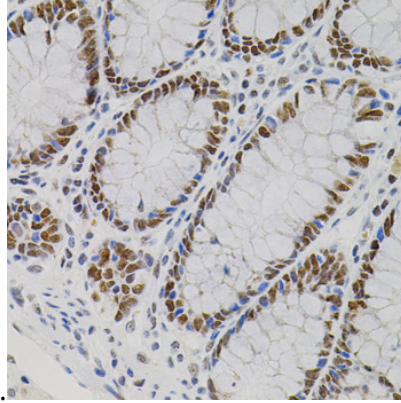
Immunohistochemistry - AKAP8 Polyclonal Antibody

Immunohistochemistry of paraffin-embedded rat liver using AKAP8 antibody (40x lens).



Immunohistochemistry - AKAP8 Polyclonal Antibody

Immunohistochemistry of paraffin-embedded human lung cancer using AKAP8 antibody (40x lens).



lens).

Immunohistochemistry - AKAP8 Polyclonal Antibody

Immunohistochemistry of paraffin-embedded human colon using AKAP8 antibody (40x lens).