

LRRK2 Polyclonal Antibody



Catalog Number: 163469

Product name

LRRK2 Polyclonal Antibody

Specificity

Human, Mouse, Rat

Antibody description

Polyclonal antibody to LRRK2

Preparation

Antigen: Recombinant fusion protein containing a sequence corresponding to amino acids 2355-2527 of human LRRK2 (NP_940980.3).

Formulation

PBS with 0.02% sodium azide, 50% glycerol, pH7.3.

Storage

Store at -20°C. Avoid freeze / thaw cycles.

Clonality

Polyclonal

Ig Type

Rabbit IgG

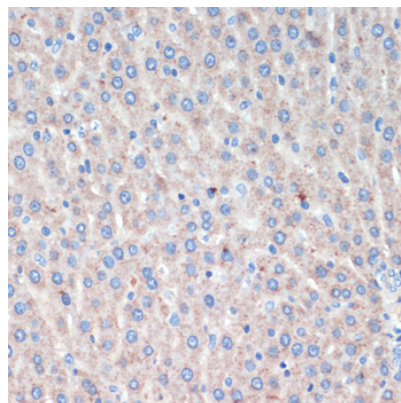
Applications

IHC

Dilutions

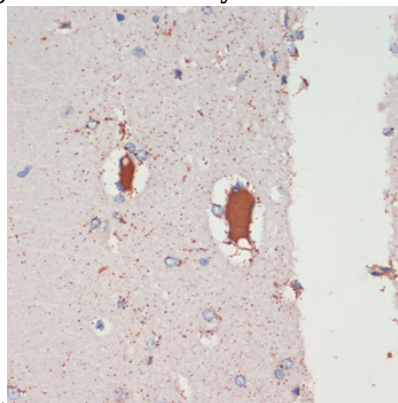
IHC 1:50 - 1:200

Validations



Immunohistochemistry - LRRK2 Polyclonal Antibody

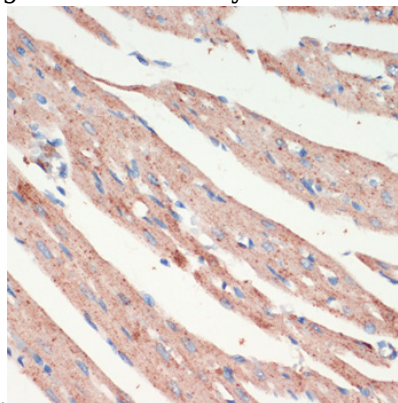
Immunohistochemistry of paraffin-embedded rat liver using LRRK2 antibody at dilution of 1:200



(40x lens).

Immunohistochemistry - LRRK2 Polyclonal Antibody

Immunohistochemistry of paraffin-embedded rat brain using LRRK2 antibody at dilution of 1:200



(40x lens).

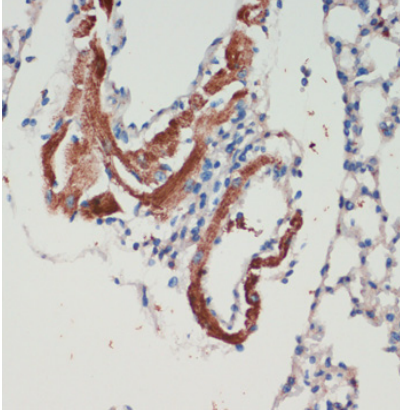
Immunohistochemistry - LRRK2 Polyclonal Antibody

LRRK2 Polyclonal Antibody



Catalog Number: 163469

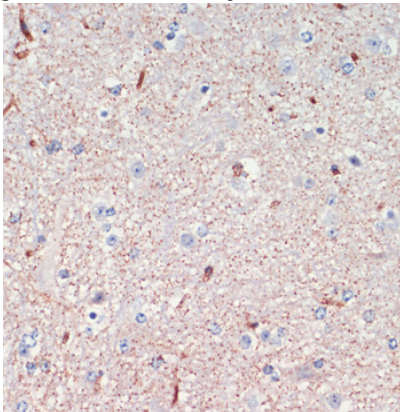
Immunohistochemistry of paraffin-embedded rat heart using LRRK2 antibody at dilution of 1:200



(40x lens).

Immunohistochemistry - LRRK2 Polyclonal Antibody

Immunohistochemistry of paraffin-embedded mouse lung using LRRK2 antibody at dilution of

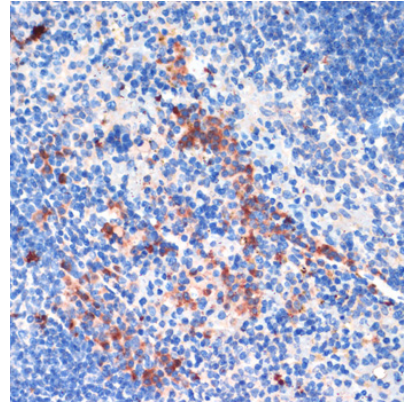


1:200 (40x lens).

Immunohistochemistry - LRRK2 Polyclonal Antibody

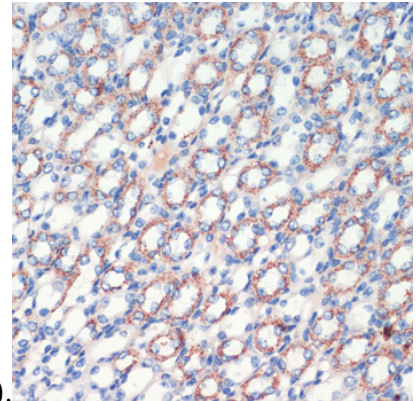
Immunohistochemistry of paraffin-embedded

mouse spinal cord using LRRK2 antibody at dilution of 1:200 (40x lens).



Immunohistochemistry - LRRK2 Polyclonal Antibody

Immunohistochemistry of paraffin-embedded mouse spleen using LRRK2 antibody at dilution of



1:200 (40x lens).

Immunohistochemistry - LRRK2 Polyclonal Antibody

Immunohistochemistry of paraffin-embedded mouse kidney using LRRK2 antibody at dilution of 1:200 (40x lens).