

# CYP27B1 Polyclonal Antibody



Catalog Number: 163434

## Product name

CYP27B1 Polyclonal Antibody

## Specificity

Human, Mouse, Rat

## Antibody description

Polyclonal antibody to CYP27B1

## Preparation

Antigen: Recombinant fusion protein containing a sequence corresponding to amino acids 25-195 of human CYP27B1 (NP\_000776.1).

## Formulation

PBS with 0.02% sodium azide, 50% glycerol, pH7.3.

## Storage

Store at -20°C. Avoid freeze / thaw cycles.

## Clonality

Polyclonal

## Ig Type

Rabbit IgG

## Applications

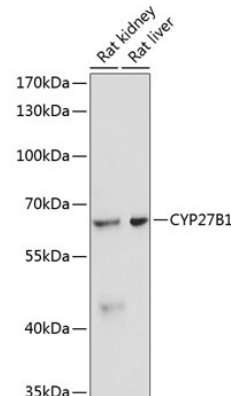
WB, IF

## Dilutions

WB 1:200 - 1:500

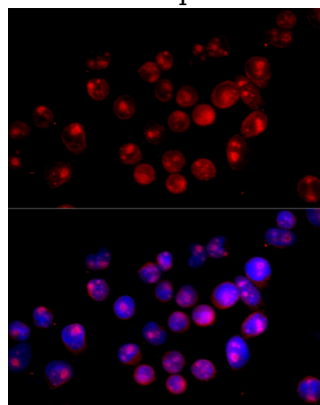
IF 1:20 - 1:50

## Validations



Western blot - CYP27B1 Polyclonal Antibody

Western blot analysis of extracts of various cell lines, using CYP27B1 antibody at 1:3000 dilution. Secondary antibody: HRP Goat Anti-Rabbit IgG (H+L) at 1:10000 dilution. Lysates/proteins: 25ug per lane. Blocking buffer: 3% nonfat dry milk in TBST. Detection: ECL Basic Kit. Exposure time: 90s.



Immunofluorescence - CYP27B1 Polyclonal Antibody

Immunofluorescence analysis of HeLa cells using CYP27B1 antibody at dilution of 1:100 (40x lens). Blue: DAPI for nuclear staining.