

# GLA Polyclonal Antibody



Catalog Number: 163395

## Product name

GLA Polyclonal Antibody

## Specificity

Human, Mouse

## Antibody description

Polyclonal antibody to GLA

## Preparation

Antigen: Recombinant fusion protein containing a sequence corresponding to amino acids 150-429 of human GLA (NP\_000160.1).

## Formulation

PBS with 0.02% sodium azide, 50% glycerol, pH7.3.

## Storage

Store at -20°C. Avoid freeze / thaw cycles.

## Clonality

Polyclonal

## Ig Type

Rabbit IgG

## Applications

WB, IHC, IF

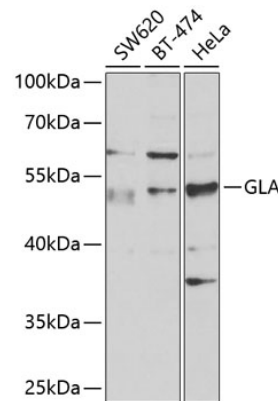
## Dilutions

WB 1:500 - 1:2000

IHC 1:50 - 1:200

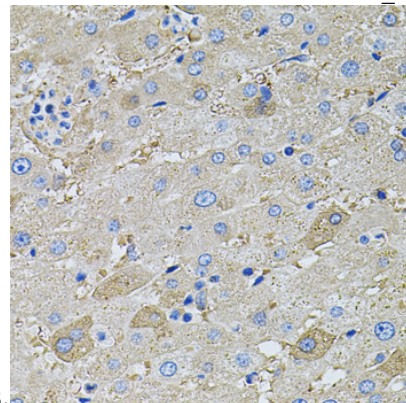
IF 1:50 - 1:100

## Validations



Western blot - GLA Polyclonal Antibody

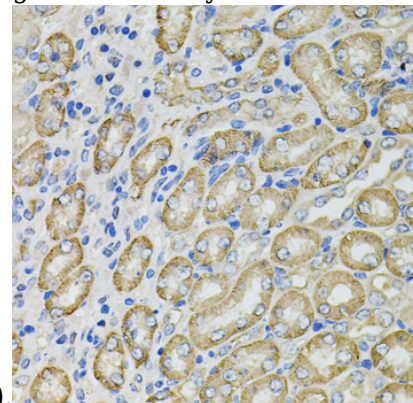
Western blot analysis of extracts of various cell lines, using GLA antibody at 1:1000 dilution. Secondary antibody: HRP Goat Anti-Rabbit IgG (H+L) at 1:10000 dilution. Lysates/proteins: 25ug per lane. Blocking buffer: 3% nonfat dry milk in TBST. Detection: ECL Enhanced Kit. Exposure



time: 30s.

Immunohistochemistry - GLA Polyclonal Antibody

Immunohistochemistry of paraffin-embedded human liver using GLA antibody at dilution of



1:100 (40x lens).

# GLA Polyclonal Antibody

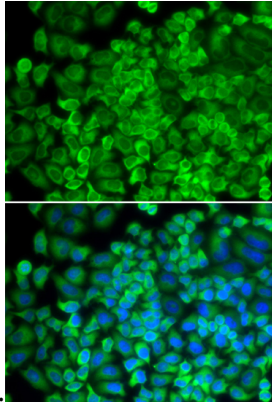


Catalog Number: 163395

---

## Immunohistochemistry - GLA Polyclonal Antibody

Immunohistochemistry of paraffin-embedded mouse kidney using GLA antibody at dilution of



1:100 (40x lens).

## Immunofluorescence - GLA Polyclonal Antibody

Immunofluorescence analysis of HeLa cells using GLA antibody . Blue: DAPI for nuclear staining.