

# COL1A1 Polyclonal Antibody



Catalog Number: 163369

## Product name

COL1A1 Polyclonal Antibody

## Specificity

Human, Mouse, Rat

## Antibody description

Polyclonal antibody to COL1A1

## Preparation

Antigen: A synthetic peptide of human COL1A1.

## Formulation

PBS with 0.02% sodium azide, 50% glycerol, pH7.3.

## Storage

Store at -20°C. Avoid freeze / thaw cycles.

## Clonality

Polyclonal

## Ig Type

Rabbit IgG

## Applications

WB, IHC, IF

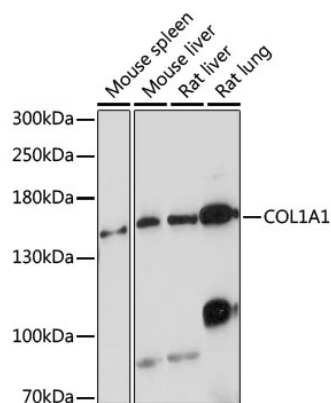
## Dilutions

WB 1:500 - 1:2000

IHC 1:50 - 1:200

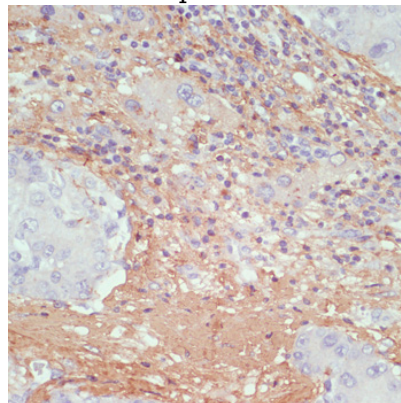
IF 1:50 - 1:200

## Validations



## Western blot - COL1A1 Polyclonal Antibody

Western blot analysis of extracts of various cell lines, using COL1A1 antibody at 1:1000 dilution. Secondary antibody: HRP Goat Anti-Rabbit IgG (H+L) at 1:10000 dilution. Lysates/proteins: 25ug per lane. Blocking buffer: 3% nonfat dry milk in TBST. Detection: ECL Basic Kit. Exposure time: 3min.



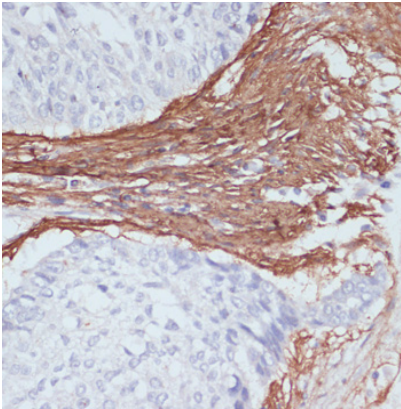
## Immunohistochemistry - COL1A1 Polyclonal Antibody

Immunohistochemistry of paraffin-embedded human liver cancer using COL1A1 antibody at dilution of 1:200 (40x lens).

# COL1A1 Polyclonal Antibody

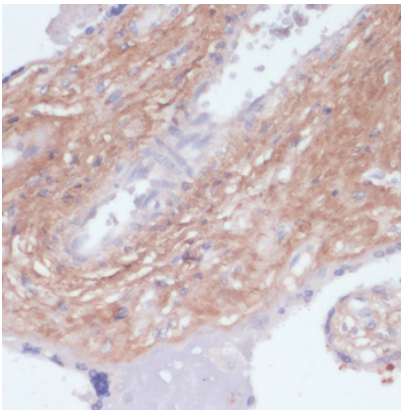


Catalog Number: 163369



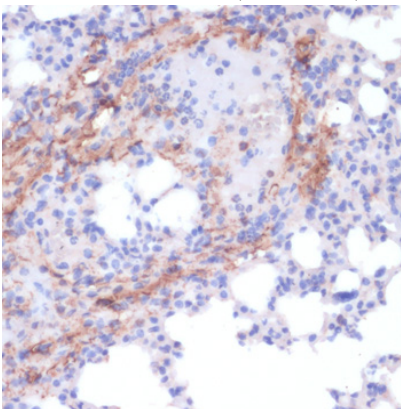
Immunohistochemistry - COL1A1 Polyclonal Antibody

Immunohistochemistry of paraffin-embedded human lung cancer using COL1A1 antibody at dilution of 1:200 (40x lens).



Immunohistochemistry - COL1A1 Polyclonal Antibody

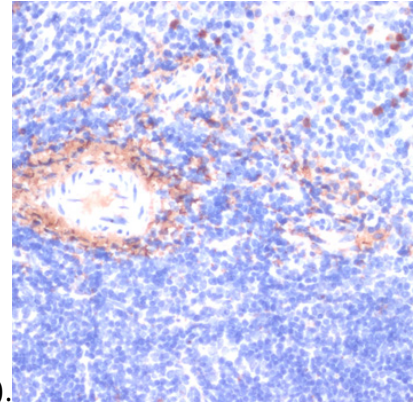
Immunohistochemistry of paraffin-embedded human placenta using COL1A1 antibody at dilution of 1:200 (40x lens).



Immunohistochemistry - COL1A1 Polyclonal

Antibody

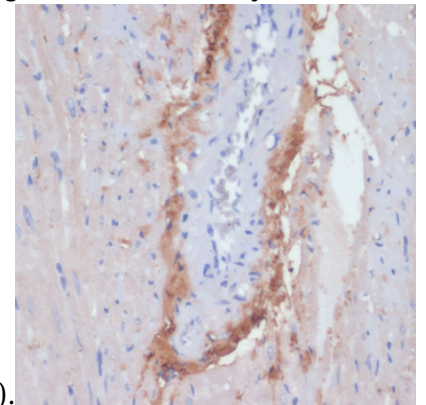
Immunohistochemistry of paraffin-embedded mouse lung using COL1A1 antibody at dilution of



1:200 (40x lens).

Immunohistochemistry - COL1A1 Polyclonal Antibody

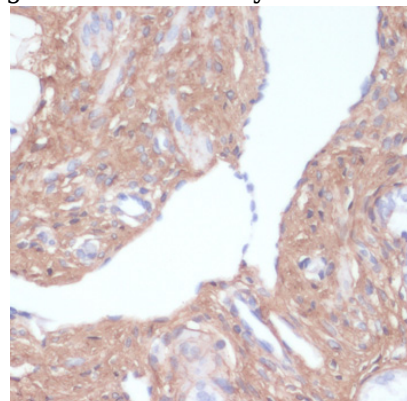
Immunohistochemistry of paraffin-embedded mouse spleen using COL1A1 antibody at dilution



of 1:200 (40x lens).

Immunohistochemistry - COL1A1 Polyclonal Antibody

Immunohistochemistry of paraffin-embedded Rat heart using COL1A1 antibody at dilution of 1:200



(40x lens).

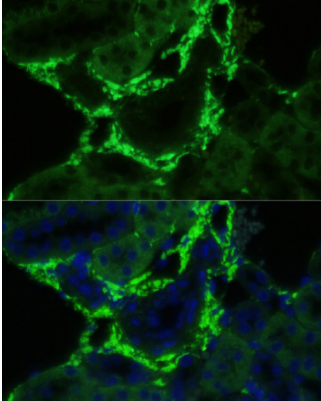
# COL1A1 Polyclonal Antibody

Catalog Number: 163369

---

## Immunohistochemistry - COL1A1 Polyclonal Antibody

Immunohistochemistry of paraffin-embedded rat ovary using COL1A1 antibody at dilution of 1:200



(40x lens).

## Immunofluorescence - COL1A1 Polyclonal Antibody

Immunofluorescence analysis of mouse kidney using COL1A1 antibody at dilution of 1:100. Blue: DAPI for nuclear staining.