

# ROS1 Polyclonal Antibody



Catalog Number: 163310

## Product name

ROS1 Polyclonal Antibody

## Specificity

Human, Mouse

## Antibody description

Polyclonal antibody to ROS1

## Preparation

Antigen: A synthetic peptide corresponding to a sequence within amino acids 2100-2200 of human ROS1 (NP\_002935.2).

## Formulation

PBS with 0.02% sodium azide, 50% glycerol, pH7.3.

## Storage

Store at -20°C. Avoid freeze / thaw cycles.

## Clonality

Polyclonal

## Ig Type

Rabbit IgG

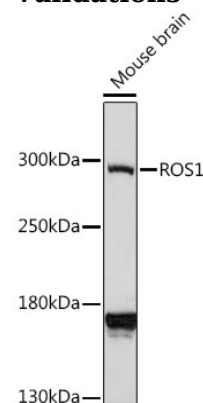
## Applications

WB

## Dilutions

WB 1:500 - 1:2000

## Validations



## Western blot - ROS1 Polyclonal Antibody

Western blot analysis of extracts of mouse brain, using ROS1 antibody at 1:1000 dilution. Secondary antibody: HRP Goat Anti-Mouse IgG (H+L) at 1:10000 dilution. Lysates/proteins: 25ug per lane. Blocking buffer: 3% nonfat dry milk in TBST. Detection: ECL Enhanced Kit. Exposure time: 3min.