

# GATA6 Polyclonal Antibody



Catalog Number: 163300

## Product name

GATA6 Polyclonal Antibody

## Specificity

Human, Mouse

## Antibody description

Polyclonal antibody to GATA6

## Preparation

Antigen: A synthetic peptide corresponding to a sequence within amino acids 500 to the C-terminus of human GATA6 (NP\_005248.2).

## Formulation

PBS with 0.02% sodium azide, 50% glycerol, pH7.3.

## Storage

Store at -20°C. Avoid freeze / thaw cycles.

## Clonality

Polyclonal

## Ig Type

Rabbit IgG

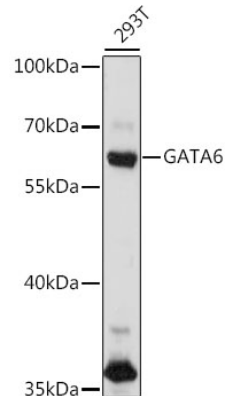
## Applications

WB

## Dilutions

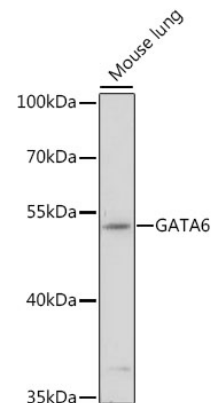
WB 1:500 - 1:2000

## Validations



### Western blot - GATA6 Polyclonal Antibody

Western blot analysis of extracts of 293T cells, using GATA6 antibody at 1:1000 dilution. Secondary antibody: HRP Goat Anti-Rabbit IgG (H+L) at 1:10000 dilution. Lysates/proteins: 25ug per lane. Blocking buffer: 3% nonfat dry milk in TBST. Detection: ECL



Basic Kit .Exposure time: 90s.

### Western blot - GATA6 Polyclonal Antibody

Western blot analysis of extracts of mouse lung, using GATA6 antibody at 1:1000 dilution. Secondary antibody: HRP Goat Anti-Rabbit IgG (H+L) at 1:10000 dilution. Lysates/proteins: 25ug per lane. Blocking buffer: 3% nonfat dry milk in TBST. Detection: ECL Basic Kit .Exposure time: 3min.