

KLF2 Polyclonal Antibody



Catalog Number: 163217

Product name

KLF2 Polyclonal Antibody

Specificity

Human, Mouse, Rat

Antibody description

Polyclonal antibody to KLF2

Preparation

Antigen: A synthetic peptide corresponding to a sequence within amino acids 50-150 of human KLF2 (NP_057354.1).

Formulation

PBS with 0.02% sodium azide, 50% glycerol, pH7.3.

Storage

Store at -20°C. Avoid freeze / thaw cycles.

Clonality

Polyclonal

Ig Type

Rabbit IgG

Applications

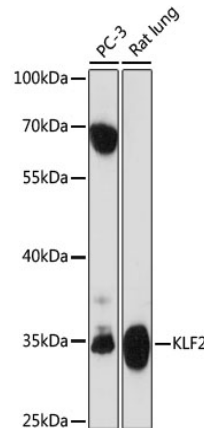
WB, IF

Dilutions

WB 1:500 - 1:2000

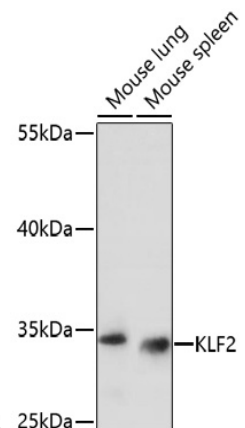
IF 1:50 - 1:200

Validations



Western blot - KLF2 Polyclonal Antibody

Western blot analysis of extracts of various cell lines, using KLF2 antibody at 1:1000 dilution. Secondary antibody: HRP Goat Anti-Rabbit IgG (H+L) at 1:10000 dilution. Lysates/proteins: 25ug per lane. Blocking buffer: 3% nonfat dry milk in TBST. Detection: ECL



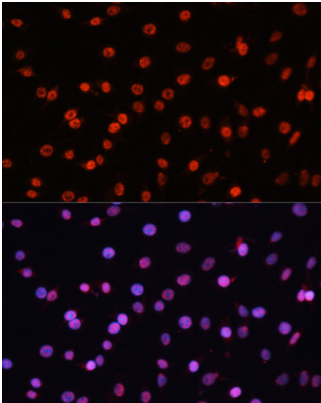
Basic Kit .Exposure time: 90S.

Western blot - KLF2 Polyclonal Antibody

Western blot analysis of extracts of various cell lines, using KLF2 antibody at 1:1000 dilution. Secondary antibody: HRP Goat Anti-Rabbit IgG (H+L) at 1:10000 dilution. Lysates/proteins: 25ug per lane. Blocking buffer: 3% nonfat dry milk in TBST. Detection: ECL Basic Kit .Exposure time: 3min.

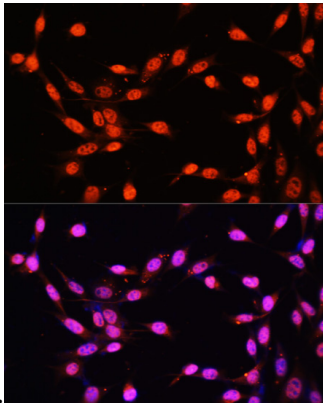
KLF2 Polyclonal Antibody

Catalog Number: 163217



Immunofluorescence - KLF2 Polyclonal Antibody

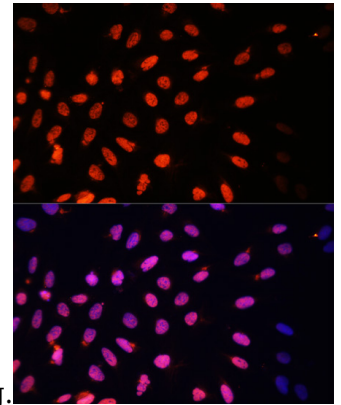
Immunofluorescence analysis of C6 cells using KLF2 antibody at dilution of 1:100. Blue: DAPI for



nuclear staining.

Immunofluorescence - KLF2 Polyclonal Antibody

Immunofluorescence analysis of NIH/3T3 cells using KLF2 antibody at dilution of 1:100. Blue:



DAPI for nuclear staining.

Immunofluorescence - KLF2 Polyclonal Antibody

Immunofluorescence analysis of U2OS cells using KLF2 antibody at dilution of 1:100. Blue: DAPI for nuclear staining.