

# FGD1 Polyclonal Antibody



Catalog Number: 163170

## Product name

FGD1 Polyclonal Antibody

## Specificity

Human, Mouse, Rat

## Antibody description

Polyclonal antibody to FGD1

## Preparation

Antigen: A synthetic peptide corresponding to a sequence within amino acids 700-800 of human FGD1 (NP\_004454.2).

## Formulation

PBS with 0.02% sodium azide, 50% glycerol, pH7.3.

## Storage

Store at -20°C. Avoid freeze / thaw cycles.

## Clonality

Polyclonal

## Ig Type

Rabbit IgG

## Applications

WB, IHC, IF

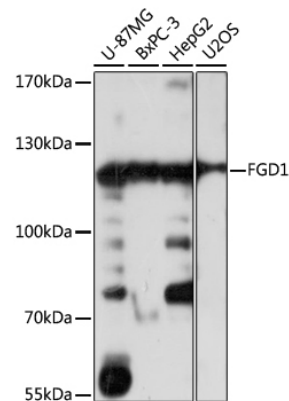
## Dilutions

WB 1:500 - 1:2000

IHC 1:50 - 1:100

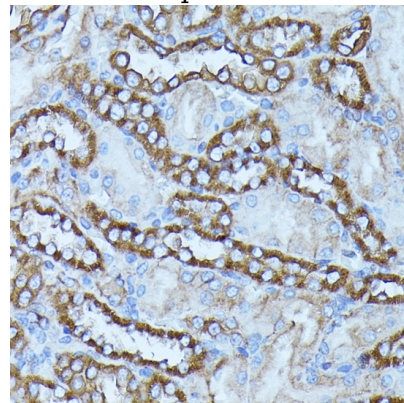
IF 1:50 - 1:100

## Validations



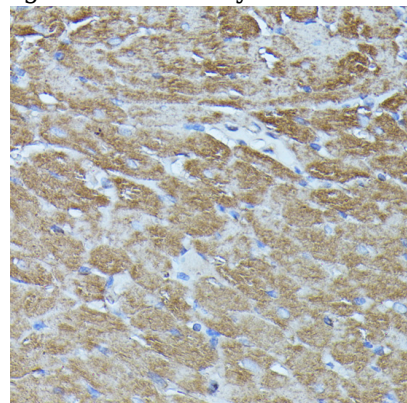
Western blot - FGD1 Polyclonal Antibody

Western blot analysis of extracts of various cell lines, using FGD1 antibody at 1:1000 dilution. Secondary antibody: HRP Goat Anti-Rabbit IgG (H+L) at 1:10000 dilution. Lysates/proteins: 25ug per lane. Blocking buffer: 3% nonfat dry milk in TBST. Detection: ECL Basic Kit. Exposure time: 1s.



Immunohistochemistry - FGD1 Polyclonal Antibody

Immunohistochemistry of paraffin-embedded rat kidney using FGD1 antibody at dilution of 1:100



(40x lens).

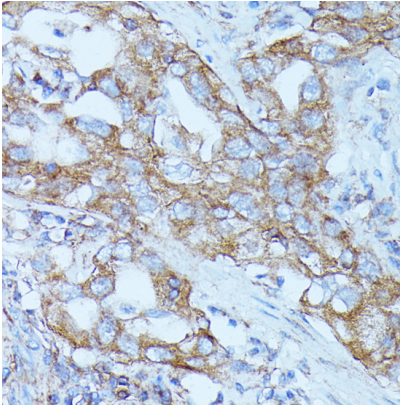
# FGD1 Polyclonal Antibody



Catalog Number: 163170

Immunohistochemistry - FGD1 Polyclonal Antibody

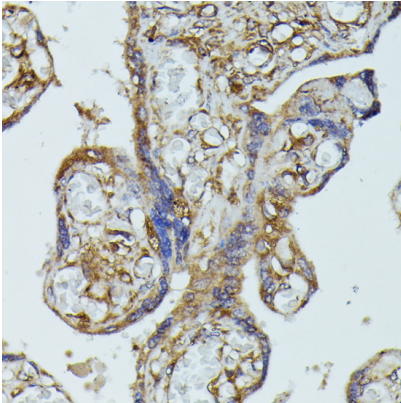
Immunohistochemistry of paraffin-embedded rat heart using FGD1 antibody at dilution of 1:100



(40x lens).

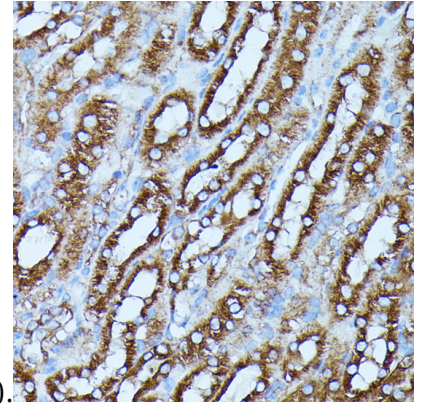
Immunohistochemistry - FGD1 Polyclonal Antibody

Immunohistochemistry of paraffin-embedded human lung cancer using FGD1 antibody at dilution of 1:100 (40x lens).



Immunohistochemistry - FGD1 Polyclonal Antibody

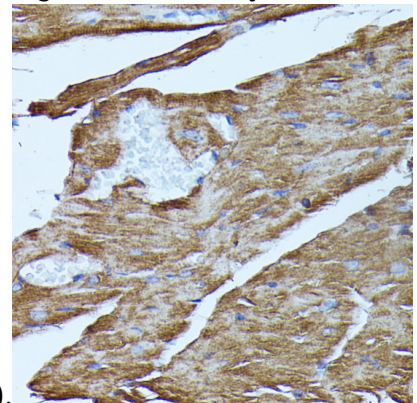
Immunohistochemistry of paraffin-embedded human placenta using FGD1 antibody at dilution



of 1:100 (40x lens).

Immunohistochemistry - FGD1 Polyclonal Antibody

Immunohistochemistry of paraffin-embedded mouse kidney using FGD1 antibody at dilution of



1:100 (40x lens).

Immunohistochemistry - FGD1 Polyclonal Antibody

Immunohistochemistry of paraffin-embedded mouse heart using FGD1 antibody at dilution of 1:100 (40x lens).