

# COL4A3 Polyclonal Antibody



Catalog Number: 163161

## Product name

COL4A3 Polyclonal Antibody

## Specificity

Human

## Antibody description

Polyclonal antibody to COL4A3

## Preparation

Antigen: A synthetic peptide corresponding to a sequence within amino acids 1600 to the C-terminus of human COL4A3 (NP\_000082.2).

## Formulation

PBS with 0.02% sodium azide, 50% glycerol, pH7.3.

## Storage

Store at -20°C. Avoid freeze / thaw cycles.

## Clonality

Polyclonal

## Ig Type

Rabbit IgG

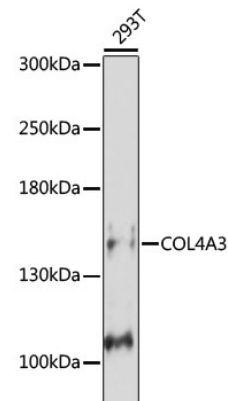
## Applications

WB

## Dilutions

WB 1:500 - 1:2000

## Validations



Western blot - COL4A3 Polyclonal Antibody

Western blot analysis of extracts of 293T cells, using COL4A3 antibody at 1:1000 dilution. Secondary antibody: HRP Goat Anti-Rabbit IgG (H+L) at 1:10000 dilution. Lysates/proteins: 25ug per lane. Blocking buffer: 3% nonfat dry milk in TBST. Detection: ECL Basic Kit. Exposure time: 30s.