

SMPD1 / ASM Polyclonal Antibody



Catalog Number: 163119

Product name

SMPD1 / ASM Polyclonal Antibody

Specificity

Human, Mouse, Rat

Antibody description

Polyclonal antibody to SMPD1 / ASM

Preparation

Antigen: Recombinant protein of human SMPD1 / ASM

Formulation

PBS with 0.02% sodium azide, 50% glycerol, pH7.3.

Storage

Store at -20°C. Avoid freeze / thaw cycles.

Clonality

Polyclonal

Ig Type

Rabbit IgG

Applications

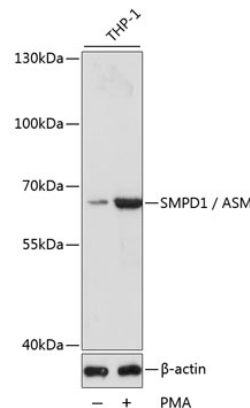
WB, IF

Dilutions

WB 1:500 - 1:2000

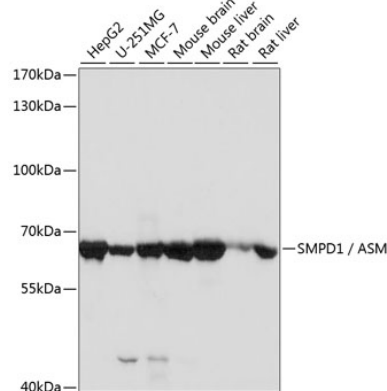
IF 1:50 - 1:100

Validations



Western blot - SMPD1 / ASM Polyclonal Antibody

Western blot analysis of extracts of THP-1 cells, using SMPD1 / ASM antibody at 1:1000 dilution. THP-1 cells were treated by PMA (80 nM) for overnight. Secondary antibody: HRP Goat Anti-Rabbit IgG (H+L) at 1:10000 dilution. Lysates/proteins: 25ug per lane. Blocking buffer: 3% nonfat dry milk in TBST. Detection: ECL Basic Kit. Exposure time: 30s.



Western blot - SMPD1 / ASM Polyclonal Antibody

Western blot analysis of extracts of various cell lines, using SMPD1 / ASM antibody at 1:1000 dilution. Secondary antibody: HRP Goat Anti-Rabbit IgG (H+L) at 1:10000 dilution. Lysates/proteins: 25ug per lane. Blocking buffer: 3% nonfat dry milk in TBST. Detection: ECL Basic Kit. Exposure time: 30s.