

XPA Polyclonal Antibody

Catalog Number: 163116

Product name

XPA Polyclonal Antibody

Specificity

Human, Mouse

Antibody description

Polyclonal antibody to XPA

Preparation

Antigen: Recombinant fusion protein containing a sequence corresponding to amino acids 1-273 of human XPA (NP_000371.1).

Formulation

PBS with 0.02% sodium azide, 50% glycerol, pH7.3.

Storage

Store at -20°C. Avoid freeze / thaw cycles.

Clonality

Polyclonal

Ig Type

Rabbit IgG

Applications

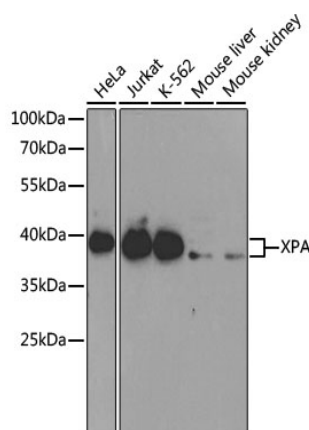
WB, IF

Dilutions

WB 1:500 - 1:2000

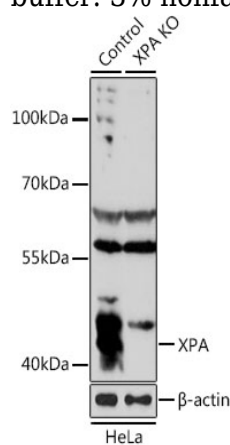
IF 1:50 - 1:100

Validations



Western blot - XPA Polyclonal Antibody

Western blot analysis of extracts of various cell lines, using XPA antibody at 1:1000 dilution. Secondary antibody: HRP Goat Anti-Rabbit IgG (H+L) at 1:10000 dilution. Lysates/proteins: 25ug per lane. Blocking buffer: 3% nonfat dry milk in TBST.

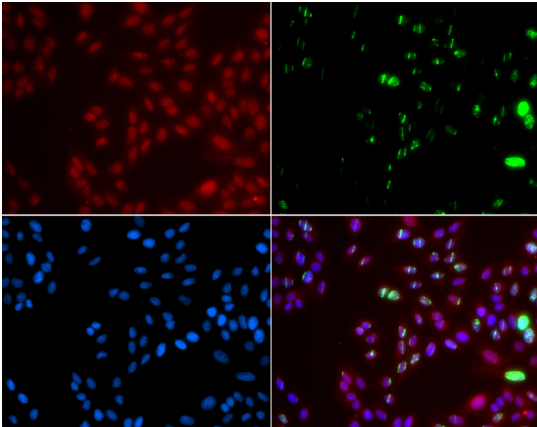


Western blot - XPA Polyclonal Antibody

Western blot analysis of extracts from normal (control) and XPA knockout HeLa cells, using XPA antibody at 1:1000 dilution. Secondary antibody: HRP Goat Anti-Rabbit IgG (H+L) at 1:10000 dilution. Lysates/proteins: 25ug per lane. Blocking buffer: 3% nonfat dry milk in TBST. Detection: ECL Basic Kit. Exposure time: 15s.

XPA Polyclonal Antibody

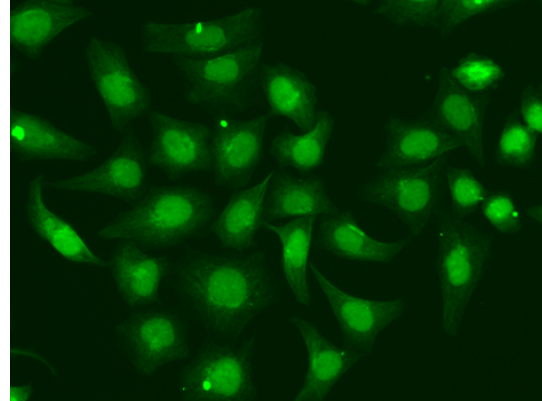
Catalog Number: 163116



Immunofluorescence - XPA Polyclonal Antibody

Immunofluorescence analysis of GFP-RNF168 transgenic U2OS cells using XPA antibody .
Greenuff1aGFP-RNF168 fusion protein expression for DNA damage marker. Blue: DAPI for nuclear

staining. RNF168 can be used to mark cells damaged by UV-A laser for they always gather around DNA damage region.



Immunofluorescence - XPA Polyclonal Antibody

Immunofluorescence analysis of A549 cells using XPA antibody .